

FY 2021
Jomon Prehistoric Sites in Northern Japan
Annual Monitoring Report

March 2023
Headquarters for World Heritage Jomon Prehistoric Sites

Introduction

Monitoring the condition of the property based on specific key indicators is important for measuring and assessing the state of conservation of the property. In case that monitoring results have identified ascertained or potential negative impact on the property and/or buffer zone, it is necessary to develop and implement measures to remove their causes in the early stage and/or reduce the negative impact.

Hokkaido, Aomori, Iwate, and Akita Prefectures, as well as the local governments of the specific places where the individual component parts are located, work together to monitor the 17 component parts of the property to make sure that the Outstanding Universal Value of the Jomon Prehistoric Sites in Northern Japan is protected and passed on to future generations in accordance with the Comprehensive Preservation and Management Plan for Jomon Prehistoric Sites in Northern Japan (hereinafter referred to as “Comprehensive Preservation and Management Plan”), which was adopted on 20 December 2019.

Based on the indicators set out in the Comprehensive Preservation and Management Plan, the 17 component parts of the Jomon Prehistoric Sites in Northern Japan are being observed under a unified approach.

This annual report consolidates the results of monitoring the individual component parts from 1 April 2021 to 31 March 2022 and summarizes the state of protection and conservation of the property and its surroundings, the state of transmission of the Outstanding Universal Value of the property, based on the monitoring results based on the key indicators.

Contents

1 Basic Information of Jomon Prehistoric Sites in Northern Japan	2
2 Policies and Structure of Monitoring	3
2.1 Policies	3
2.2 Monitoring structure	3
3 Results of Monitoring	4
3.1 Monitoring indicators concerning the property’s OUV, integrity, and authenticity	4
3.2 Monitoring indicators concerning the protection and management of the component parts	5
3.3 Monitoring indicators concerning the factors that affect the property	6
3.4 Monitoring indicators concerning the transmission of the OUV	7
4 Summary	53

1 Basic Information of Jomon Prehistoric Sites in Northern Japan

The Jomon Prehistoric Sites in Northern Japan (hereinafter referred to as "the property") consist of 17 component parts, which are located in the southwestern part of Hokkaido Island and, across the Tsugaru Strait, in the northern part of Honshu Island of the Japanese archipelago. The geographical coordinates of the individual component parts are given in Table 1-1 and Figure 1-1.

Property: 141.9ha
Buffer Zone: 984.8ha
Total: 1,126.7ha

Table 1-1 Names, regions, and coordinates of component parts

ID No.	Name of component part	Location	Category under the World Heritage Convention	Category under the Law for the Protection of Cultural Properties	Coordinates of central point	Area of property (ha)	Area of buffer zone (ha)
001	Odai Yamamoto Site	Sotogahama Town, Aomori Prefecture	Site	Historic Site	N41°03'56" E140°33'08"	0.7	49.1
002	Kakinoshima Site	Hakodate City, Hokkaido Prefecture	Site	Historic Site	N41°55'45" E140°56'54"	7.6	53.5
003	Kitakogane Site	Date City, Hokkaido Prefecture	Site	Historic Site	N42°24'08" E140°54'42"	14.4	32
004	Tagoyano Site	Tsugaru City, Aomori Prefecture	Site	Historic Site	N40°53'16" E140°20'16"	6.3	261.5*1
005	Futatsumori Site	Shichinohe Town, Aomori Prefecture	Site	Historic Site	N40°44'55" E141°13'45"	4.3	41.9
006	Sannai Maruyama Site	Aomori City, Aomori Prefecture	Site	Special Historic Site	N40°48'37" E140°41'56"	23.5	69.7
007	Ofune Site	Hakodate City, Hokkaido Prefecture	Site	Historic Site	N41°57'27" E140°55'30"	3.5	18.3
008	Goshono Site	Ichinohe Town, Iwate Prefecture	Site	Historic Site	N40°11'53" E141°18'21"	5.5	65.5
009	Irie Site	Toyako Town, Hokkaido Prefecture	Site	Historic Site	N42°32'34" E140°46'31"	2.4	34.0*2
010	Komakino Stone Circle	Aomori City, Aomori Prefecture	Site	Historic Site	N40°44'15" E140°43'40"	8.8	26.9
011	Isedotai Stone Circles	Kitaakita City, Akita Prefecture	Site	Historic Site	N40°12'11" E140°20'48"	15.6	108.8
012	Oyu Stone Circles	Kazuno City, Akita Prefecture	Site	Special Historic Site	N40°16'17" E140°48'16"	15.7	37
013	Kiusu Earthwork Burial Circles	Chitose City, Hokkaido Prefecture	Site	Historic Site	N42°53'12" E141°43'00"	10.9	22.9
014	Omori Katsuyama Stone Circle	Hirosaki City, Aomori Prefecture	Site	Historic Site	N40°41'56" E140°21'30"	8.5	115.3
015	Takasago Burial Site	Toyako Town, Hokkaido Prefecture	Site	Historic Site	N42°32'48" E140°46'11"	2.8	34.0*2
016	Kamegaoka Burial Site	Tsugaru City, Aomori Prefecture	Site	Historic Site	N40°53'02" E140°20'12"	10.1	261.5*1
017	Korekawa Site	Hachinohe City, Aomori Prefecture	Site	Historic Site	N40°28'25" E141°29'27"	1.3	48.4

Note 1: 004 Tagoyano Site and 016 Kamegaoka Burial Site are surrounded by an integral buffer zone.

Note 2: 009 Irie Site and 015 Takasago Burial Site are surrounded by an integral buffer zone.

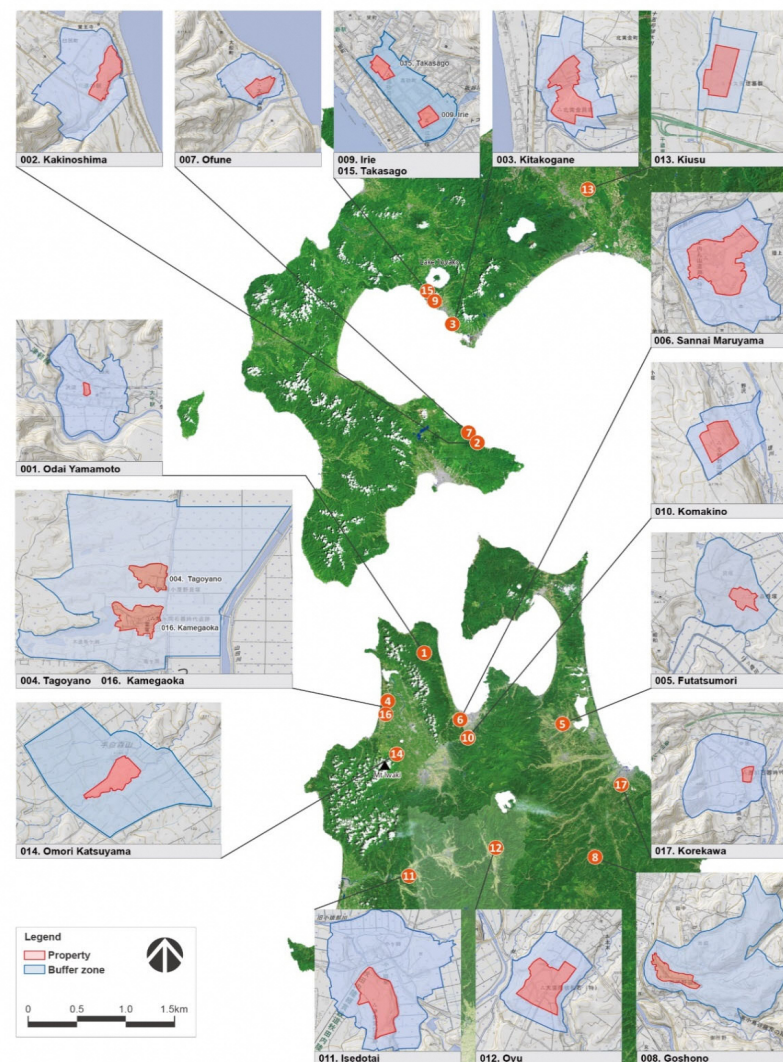


Figure1-1 Map indicating the extent of the nominated serial property and buffer zone

2 Policies and Structure of Monitoring

2.1 Policies

For protecting and conserving the Outstanding Universal Value of the property, the appropriate monitoring indicators have been identified based on the following three perspectives for various conditions affecting the property and buffer zone. Based on these indicators, monitoring is to be carried out periodically in a systematic manner.

- (1) If the Outstanding Universal Value of the property is maintained together with integrity and authenticity;
- (2) What impact factors that can affect the state of conservation of the property (development, environmental change, natural disaster, and tourism) have or had on the property, buffer zone and wider setting; and
- (3) If the property, buffer zone, and wider setting surrounding them are mutually linked to be able to function as the appropriate place to transmit the knowledge about the Outstanding Universal Value as a World Heritage property.

2.2 Monitoring Structure

Under the guidance of the Agency for Cultural Affairs, the local governments in charge of the individual component parts carry out the monitoring activities in cooperation with Hokkaido, Aomori, Iwate, and Akita Prefectures, depending on which prefecture the local governments are located in (Figure 2-1, Table 2-1).

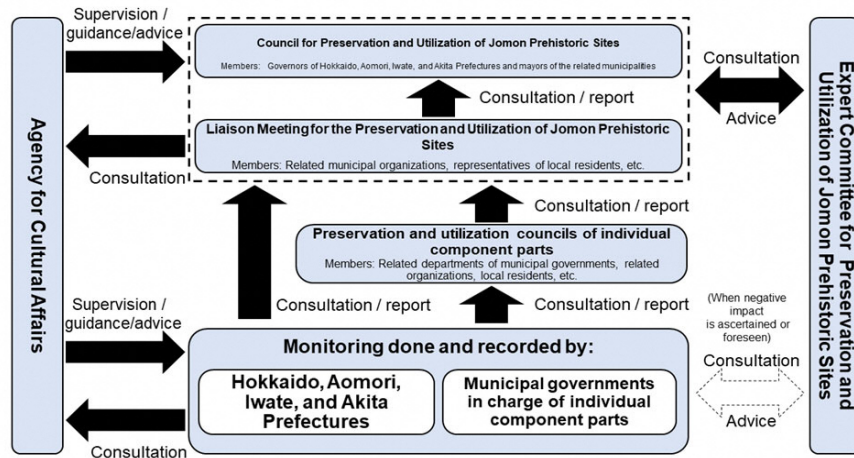


Figure 2-1 Monitoring Structure in fiscal year 2021

Table 2-1 Monitoring system

Responsibilities	Area	Organizations in charge
Organizations and departments in charge	Property and buffer zone	Organizations and representatives Hakodate City Mayor Chitose City Mayor Date City Mayor Toyako Town Mayor Aomori Prefecture Governor Aomori City Mayor Hirosaki City Mayor Hachinohe City Mayor Tsugaru City Mayor Sotogahama Town Mayor Shichinohe Town Mayor Ichinohe Town Mayor Kazuno City Mayor Kitaakita City Mayor
		Departments in charge and officers in charge Hakodate City Director Manager, Cultural Property Division, Lifelong Learning Department, Board of Education Chitose City Director, Archaeological Center, Chitose City, Board of Education Date City Director, Date City Institute of Funkawan Culture, Board of Education Toyako Town Director Manager, Social Education Division, Board of Education Aomori Prefecture Director, Sannai Maruyama Jomon Culture Center Aomori City Director Manager, Cultural property Division, Board of Education Hirosaki City Director Manager, Cultural Property Division, Board of Education Hachinohe City Deputy Director, Korekawa Archaeological Institution Korekawa Jomon Kan Tsugaru City Director Manager, Social Educational Cultural Division, Board of Education Sotogahama Town Director Manager, Social Educational Division, Board of Education Shichinohe Town Director, World Heritage Office, Board of Education Ichinohe Town Director, Goshono Jomon Museum, Board of Education Kazuno City Director Manager, Oyu Stone Circle Museum Kitaakita City Director Manager, Lifelong Learning Division, Board of Education
Supervising organization	Property and buffer zone	Organization and representative Commissioner, Agency for Cultural Affairs Department in charge and responsible person Director Manager, Cultural Resource Utilization Division
Advisory organization	Property and buffer zone	Organizations and representatives Hokkaido Prefecture Governor Aomori Prefecture Governor Iwate Prefecture Governor Akita Prefecture Governor Departments in charge and officers in charge Hokkaido Prefecture Manager, Jomon World Heritage Promotion Office, Culture Promotion Division, Bureau of Culture, Department of Environment and Lifestyle Hokkaido Prefecture Manager, Cultural Asset/Museum Department, Lifelong Learning Promotion Office, Hokkaido Board of Education Aomori Prefecture Manager, World Cultural Heritage Registration Promotion Office in Aomori Prefecture Aomori Prefecture Manager, Cultural Property Protection Division, Agency of Education of Aomori Prefecture Iwate Prefecture Director Manager, Cultural Promotion Division, Culture and Sports Department, Iwate Prefecture Iwate Prefecture Director Manager, Cultural Asset Division/World Heritage Registration Promotion Office, Lifelong Learning Department, Iwate Education Board Akita Prefecture Director, Cultural Assets Preservation Office, Lifelong Learning division, Agency of Education of Akita Prefecture

3 Results of Monitoring

3.1 Monitoring indicators concerning the property's OUV, integrity, and authenticity

Item	Indicator	Content and method of measurement	Note
I. Protection and management of the attributes that convey the OUV	I-1. Attribute (a) Demonstrating a lifestyle characterized by managed use of natural resources.	To check and record the state of conservation of archaeological remains and artifacts (from II-2 to II-8, II-10 to 13, IV-1, V-2).	
		To check the condition of the vegetation in the component parts and surrounding area and its state of management (II-9, IV-2).	
		To check the views from the component parts to the surrounding area (II-15, from III-1 to 5, IV-2).	
	I-2. Attribute (b) Demonstrating complex spirituality, as evident in rituals and ceremonies.	To check and record the state of conservation of archaeological remains and artifacts (from II-2 to II-8, II-10 to 13, II-12, IV-1, V-2).	
		To check the views from the component parts to the surrounding area (II-15, from III-1 to III-5, IV-2).	
	I-3. Attribute (c) Demonstrating diverse relations between the settlement locations and livelihood.	To check the views from the component parts to the surrounding area and the views of the component parts from the surrounding area (II-15, from III-1 to III-5, IV-2).	
		To check and record collapse or deformation of the land form of the component parts' locations (II-10, V-2, VI-1, VI-2).	
		To check the condition of the vegetation in the component parts and surrounding area and its state of management (II-9, IV-2).	
		To check visually disturbing factors in the surrounding area of the component parts and the state improvement or change in landscape (II-15, from III-1 to III-5).	
	I-4. Attribute (d) Demonstrating the transition of the form of settlements.	To check and record the state of conservation of archaeological remains and artifacts (from II-2 to II-8, from II-10 to 13, IV-1, V-2).	
		To check the views from the component parts to the surrounding area (II-15, from III-1 to III-5, IV-2).	
		To check the basic information for countermeasures to address damage etc. (II-1-4, 11, 14, III-4, IV-1, V-1, VI-1 and 2).	

3.2 Monitoring indicators concerning the protection and management of the component parts

Item	Indicator		Result in FY 2019	Result in FY 2020	Result in FY 2021	Note
II. State of conservation of the property and the protection and management of the property	II-1. Number of meetings of the Jomon Sites World Heritage Preservation and Utilization Council etc.	To count the number of meetings of the Council for Preservation and Utilization, Liaison Meeting, and Expert Committee, at which information is shared and views are exchanged.	1	1	1	Liaison Meeting for the Preservation and Utilization of the World Heritage Jomon Prehistoric Sites (16 February 2022)
	II-2. Number of cases of alteration of the existing state in the component parts	To record the number and content of applications and notifications for alteration of the existing state of Historic Sites under the Law for the Protection of Cultural Properties.	29	28	39	Refer to Table 1.
	II-3. Number of cases of damage in the component parts	To record the number and details of reports of damage to Historic Sites under the Law for the Protection of Cultural Properties.	1	2	2	Refer to Table 2.
	II-4. Number of cases of Heritage Impact Assessment	To keep track of the number of heritage impact assessments carried out for Historic Site maintenance and repair when damaged.	0	4	9	Refer to Table 3. *A trial operation of the heritage impact assessment started on 1 April
	II-5. Ratio of public land in component parts	To check the progress in purchasing the ownership of private land.	—	—	—	Refer to Table 4.
	II-6. Status of archaeological remains	To record the condition of archaeological remains by observation and photography.	—	—	—	Refer to the annual report of each component part. No major changes have occurred.
	II-7. Change in air temperature, humidity, and precipitation over time	To make a continual observation of the air and check change in air temperature, humidity, and precipitation.	Annual average temperature	Annual average temperature	Annual average temperature	Refer to the annual report of each component part. No major changes have occurred.
			Humidity	Humidity	Humidity	
			Annual precipitation	Annual precipitation	Annual precipitation	
	II-8. Groundwater level	To monitor the quality and quantity of water in low wetland.	—	—	—	Refer to the annual report of each component part. No major changes have occurred.
	II-9. Status of the vegetation	To check the condition of the vegetation by observation and photography.	—	—	—	Refer to the annual report of each component part. No major changes have occurred.
	II-10. Post-disaster damage	To check damage to the component parts in case a disaster occurs, such as storm, flood, landslide, and earthquake.	No damage	No damage	No damage	Refer to the annual report of each component part.
	II-11. Number of meetings of the Preservation and Utilization Council for each component part	To count the number of meetings of the Historic Site improvement committees or preservation and utilization councils centering on municipalities in charge of component parts.	39	35	32	Refer to Table 5.
	II-12. Study and research of the property	To check the status and details of study and research of the property as well as the number of published reports containing the research outcomes	10	19	17	Refer to Table 6.
	II-13. Study and research of associated cultural properties	To check the status and details of study and research that have been made about cultural properties associated with the property as well as the number of published reports containing the research outcomes.	7	6	5	Refer to Table 7.
II-14. Strengthening of capacities for study and research	To count the number of professionals conducting study and research of the component parts.	60	63	65	Refer to Table 8.	
II-15. Status of removal etc. of non-compliant structures	To identify the status of removal etc. of non-compliant structures existing in component parts.	—	—	—	Refer to the annual report of each component part.	

3.3 Monitoring indicators concerning the factors that affect the property

Item	Indicator		Result in FY 2019		Result in FY 2020		Result in FY 2021		Note
III. Development pressure	III-1. Number of contracts of public works	To count the number of contracts that have been made for public works in the buffer zone, such as road, flood prevention works at the river, and erosion control in the mountain.	14		10		12		Refer to Table 9.
	III-2. Number of development projects in the private sector	To count the number of development permission application submissions and building confirmation requests in the buffer zone.	Number of development permission applications	20	Number of development permission applications	14	Number of development permission applications	24	Refer to Tables 10 and 11.
			Number of building confirmation requests	0	Number of building confirmation requests	1	Number of building confirmation requests	2	
	III-3. Number of prior notification submission under the Landscape Ordinance	To count the number of prior notifications that are submitted in accordance with the Landscape Ordinance.	Number of prior notifications	1	Number of prior notifications	6	Number of prior notifications	5	Refer to Tables 12 and 13.
			Number of prior consultations	1	Number of prior consultations	6	Number of prior consultations	3	
	III-4. Number of conducted cases of heritage impact assessments	To identify the number of heritage impact assessments conducted for development activities, etc.	0		12		27		Refer to Table 14. *A trial operation of the heritage impact assessment started on 1 April 2020.
III-5. Observation of views to and from the component parts	To identify visually disturbing elements in the views from the fixed observation points.	—		—		—		Refer to the annual report of each component part. No major changes have occurred.	
IV. Environmental change	IV-1. Achievement of environmental standards related to air pollution (sulfur dioxide and nitrogen dioxide)	To measure the concentrations of sulfur dioxide and nitrogen dioxide in the air through constant monitoring of the air.	Sulfur dioxide		Sulfur dioxide		Sulfur dioxide		There are no places that environmental standards have been exceeded. N.B., Environmental standard for sulfur dioxide: must not exceed 0.04 ppm Environmental standard for nitrogen dioxide: must not exceed 0.06 ppm
			Annual average	0.000-0.002 ppm	Annual average	0.000-0.001 ppm	Annual average	0.000-0.002 ppm	
			Annual 98th percentile (exclusive) of daily average	0.001-0.009 ppm	Annual 98th percentile (exclusive) of daily average	0.001-0.009 ppm	Annual 98th percentile (exclusive) of daily average	0.001-0.006 ppm	
			Compliance with environmental standards	Yes	Compliance with environmental standards	Yes	Compliance with environmental standards	Yes	
			Nitrogen dioxide		Nitrogen dioxide		Nitrogen dioxide		
			Annual average	0.002-0.008 ppm	Annual average	0.002-0.010 ppm	Annual average	0.002-0.010 ppm	
			Annual 98th percentile of daily average	0.0016-0.023 ppm	Annual 98th percentile of daily average	0.008-0.028 ppm	Annual 98th percentile of daily average	0.008-0.027 ppm	
	Compliance with environmental standard	Yes	Compliance with environmental standard	Yes	Compliance with environmental standard	Yes			
	IV-2. Vegetation status	To check the state of excessive growth of plants in the surrounding area of the property by observation and photography.	—		—		—		Refer to the annual report of each component part. No major changes have occurred.
V. Natural disasters	V-1. Observation of disaster related information	To check the occurrence of disasters due to weather, earthquake, tsunami, and volcanic activity.	0		3		8		Refer to the annual report of each component part.
	V-2. State of the archaeological remains at the time of a disaster	To check the damage caused by storm and flood damage, landslide disaster, earthquake, etc., in and around the component parts.	No damage		No damage		No damage		Refer to the annual report of each component part.
VI. Tourism pressure	VI-1. Number of visitors	To count the number of visitors to the component parts.	Number of visitors to component parts		Number of visitors to component parts		Number of visitors to component parts		Refer to Tables 15 and 16.
			289,532		145,676		275,528		
			Number of visitors to interpretation facilities		Number of visitors to interpretation facilities		Number of visitors to interpretation facilities		
			329,223		167,467		268,960		
	VI-2. Number of motor vehicles	To count the situation of motor vehicles that have used the parking lots in the surrounding area of the component parts.	No impact		No impact		No impact		Refer to Tables 17 and 18.
VI-3. State of installation of convenience facilities	To check the state of facilities etc. that have been installed at the component parts for the convenience of visitors.	—		—		—		Refer to Tables 19 and 20.	

3.4 Monitoring indicators concerning the transmission of the Outstanding Universal Value

Item	Indicator		Result in FY 2019	Result in FY 2020	Result in FY 2021	Note
VII. Transmission of the Outstanding Universal Value	VII-1. Number of participants in workshops etc. about the property	To count the number of participants in workshops, seminars, etc. which are organized about the property.	53,789	193,279	119,321	Refer to Table 21.
	VII-2. Establishment of interpretation facilities	To identify situations of establishment of interpretation facilities	—	—	—	Refer to Table 22.
	VII-3. Information provision through pamphlets and websites	To count the number of times and the state of information provision through published pamphlets and websites of the local governments.	Number of publications of pamphlets etc. (times)	Number of publications of pamphlets etc. (times)	Number of publications of pamphlets etc. (times)	Refer to Tables 23 and 24.
			26	31	50	【FY 2021】 Quantity of publication of pamphlets etc. (copies): 972,241 Number of website accesses: 1,883,249 Number of published contents of JOMON ARCHIVES: 1,114
			Number of website updates (times)	Number of website updates (times)	Number of website updates (times)	【FY 2020】 Quantity of publications of pamphlets etc. (copies): 262,871 Number of website accesses: more than 873,732
			516	More than 510	756	
VIII. Activities of local people and civic groups	VIII-1. Number of activities related to the property by local people and civic groups	To count the number of activities at the component parts in which local people, civic group, etc. have participated and the number of participants.	124,958	89,035	67,184	Refer to Table 25–27.

Table 1 Number of alterations to the existing state at each component part (related with Indicator II-2)

	Name of the component part	FY 2019	FY 2020	FY 2021	FY 2021 Note
001	Odai Yamamoto Site	1	1	1	Historic Site improvement (display of excavated artifacts, installation of explanatory boards, pavement of the park trail surface, etc.)
002	Kakinoshima Site	2	1	4	Installation of the fence, Historic Site improvement, installation of temporary structures, planting of trees
003	Kitakogane Site	2	1	0	
004	Tagoyano Site	5	2	5	Archaeological excavations, placement of surveying stakes, removal of a combined-use house, removal of standing trees, installation of box-type signs
005	Futatsumori Site	0	0	0	
006	Sannai Maruyama Site	7	6	10	Archaeological excavations, cutting of trees at south and north valleys, installation of two Historic Site boundary markers, placement of timber stakes, installation/repair of the fence along the site perimeter, repair of raised-floor building No.28, installation of rope sticks at the adults' grave, removal of dead standing trees, repair of steps at the south earth mound
007	Ofune Site	4	6	1	Repair of structures
008	Goshono Site	1	0	0	
009	Irie Site	1	1	1	Repair of convenience facilities etc.
010	Komakino Stone Circle	0	0	1	Removal of a decaying tree
011	Isedotai Stone Circles	1	1	0	
012	Oyu Stone Circles	1	1	2	Installation of the electric fence for the safety of the Historic Site park, alteration to the existing state for Kazuno City's tree-planting event
013	Kiusu Earthwork Burial Circles	0	0	3	Archaeological excavation prior to a Historic Site improvement project, removal of standing trees for preservation of archaeological remains and improvement of visitation environment, temporary placement of visitors' equipment
014	Omori Katsuyama Stone Circle	3	4	3	Application for permission for alteration to the existing state for improvement works
015	Takasago Burial Site	0	0	0	
016	Kamegaoka Burial Site	0	2	6	Archaeological excavation, installation of prefabricated offices and toilets for archaeological excavation, removal of standing trees, replacement of utility poles, installation of box-type signs, installation of temporary boundary-marking stakes
017	Korekawa Site	1	2	2	Installation of temporary hut and fence, dismantlement and removal of the existing facilities
Total		29	28	39	

Table 2 Number of damage-causing incidents within the each component part (related with Indicator II-3)

	Name of the component part	FY 2019	FY 2020	FY 2021	FY 2021 Note
001	Odai Yamamoto Site	0	0	0	
002	Kakinoshima Site	0	0	0	
003	Kitakogane Site	0	0	0	
004	Tagoyano Site	0	0	0	
005	Futatsumori Site	0	0	0	
006	Sannai Maruyama Site	0	1	0	
007	Ofune Site	0	0	0	
008	Goshono Site	0	0	0	
009	Irie Site	0	0	0	
010	Komakino Stone Circle	1	0	0	
011	Isedotai Stone Circles	0	0	0	
012	Oyu Stone Circles	0	1	2	(i) Collapse of two column-shaped markers that indicate the locations of underground archaeological remains. (ii) Cave-in of the red road within the property.
013	Kiusu Earthwork Burial Circles	0	0	0	
014	Omori Katsuyama Stone Circle	0	0	0	
015	Takasago Burial Site	0	0	0	
016	Kamegaoka Burial Site	0	0	0	
017	Korekawa Site	0	0	0	
Total		1	2	2	

Table 3 The state of implementation of heritage impact assessments within the property (related with Indicator II-4)

【Results of the deliberation to decide on whether detailed analysis of the act is required or not】

Name of component part	Location	Outline of the act	Impact	Detailed analysis	Reason for the decision taken	Record-keeping body
Odai Yamamoto Site	Within the property area	Improvement work.	None	Not necessary	The improvement work is expected to strengthen the protection of the archaeological site and help visitors understand the value of the property. There is no impact on the OUV or attributes. Since it is considered to be categorized as Level 1 on the scale of Schedule 5 of the assessment guidance, no detailed analysis is deemed necessary.	Sotogahama Town Board of Education
Sannai Maruyama Site	Within the property area	Historic Site improvement project (removal of trees at the north valley, south valley, etc.).	None	Not necessary	Since the trees are truncated above the root, there is no impact on the underground archaeological remains. It is to be carried out as part of Historic Site improvement work, after discussed at the Improvement Review Committee. It is expected that the removal of these trees will improve the landscape.	Sannai Maruyama Jomon Culture Center
Oyu Stone Circles	Within the property area	Installation of the electric fence.	None	Not necessary	Although there will be visual change within the property, the fence is installed within the protective soil, without any negative impact on the OUV or attributes.	Kazuno City Board of Education
Oyu Stone Circles	Within the property area	Removal of the electric fence.	None	Not necessary	Although there will be visual change within the property, there is no negative impact on the OUV or attributes.	Kazuno City Board of Education
Kiusu Earthwork Burial Circles	Within the property area	Archaeological excavation of Kiusu Earthwork Burial Circle No.2 prior to a Historic Site improvement project (re-excavation of the area excavated in 1965) and survey of the distribution of archaeological remains in the Historic Site (excluding the Earthwork Burial Circles).	None	Not necessary	The archaeological excavation at Earthwork Burial Circle No.2 is planned to be limited to a small trench, approximately 48 m ² , which was already excavated in the past, and even if it becomes necessary to excavate a new area, it will be kept to a minimum. The distribution survey is planned to be carried out by digging 20 trenches of 3 m ² and recording archaeological remains, if any, without excavating deeper. Therefore, impact on the archaeological remains will be insignificant. In both cases, excavated trenches will be reburied back to the original state after completion. Therefore, it is deemed that there will be no visual impact.	Chitose City Board of Education
Kiusu Earthwork Burial Circles	Within the property area	Cutting of trees growing on the earthwork burial circles (without uprooting the stumps of the cut trees) to prevent trees breaking or falling in a strong wind from destroying the archaeological site and removal of dead branches of trees standing close to visitor routes to ensure the safety of visitors. The work is to be done without heavy machinery entering the Historic Site and with care not to damage the ground surface.	None	Not necessary	As a result of cutting trees that currently stand within the area where archaeological remains exist, there will be visual change. However, the purpose of cutting these trees is to prevent the destruction of the underground archaeological remains, which will lead to the protection of the OUV in the medium and long term. The visual impact of the removal of the dead branches is extremely insignificant. No heavy machinery is used for cutting or transporting trees. It is deemed that impact on the landform is insignificant.	Chitose City Board of Education
Kiusu Earthwork Burial Circles	Within the property area	Pavement of the visitor route--outside the earthwork burial circles--with woodchips and temporary installation of one observation deck. In both cases, the foundation is placed directly on the ground without any excavation.	None	Not necessary	The impact of pavement is short-term, as the woodchips will decompose naturally. The observation deck is a temporary structure, which is so light as to be carried by two adults. Since the number of people who can use the deck at one time is limited to three, the pressure on the ground surface is small, and it is expected to have little impact on the landform. Based on the above, the impact on the OUV is deemed to be insignificant.	Chitose City Board of Education
Kamegaoka Burial Site	Within the property area	Survey to obtain supplementary information for Historic Site improvement work.	None	Not necessary	Archaeological excavation is to be carried out basically by the trench method, and excavation is to be kept to a minimum. It has been deemed that the impact on the underground component part is extremely limited.	Tsugaru City Board of Education
Korekawa Site	Within the property area	Removal of the existing facilities, as part of Historic Site improvement work.	None	Not necessary	New excavation is to be kept to a minimum, with extremely insignificant impact on the component part. In addition, views will be improved. Therefore, it complies with preservation and management policies.	Hachinohe City Buried Cultural Property Center, Korekawa Archaeological Institution

【Case with detailed analysis carried out】

Name of the component part	Location	Outline of the act	Impact	Detailed analysis	Reasons for the decision taken	Record-keeping body
None						

Table 4 Ratio of public land in each component part (related with Indicator II-5)

	Name of the component part	FY 2019	FY 2020	FY 2021	FY 2021 Note
001	Odai Yamamoto Site	71.41%	71.41%	71.41%	A single plot (in the northern part)
002	Kakinoshima Site	100.00%	100.00%	100.00%	
003	Kitakogane Site	100.00%	100.00%	100.00%	
004	Tagoyano Site	45.00%	67.00%	84.00%	
005	Futatsumori Site	100.00%	100.00%	100.00%	
006	Sannai Maruyama Site	100.00%	100.00%	100.00%	
007	Ofune Site	100.00%	100.00%	100.00%	
008	Goshono Site	100.00%	100.00%	100.00%	
009	Irie Site	100.00%	100.00%	100.00%	
010	Komakino Stone Circle	83.18%	83.18%	83.18%	Public land: 72,901.16 m ² / Property: 87,632.61 m ²
011	Isedotai Stone Circles	100.00%	100.00%	100.00%	
012	Oyu Stone Circles	100.00%	100.00%	100.00%	
013	Kiusu Earthwork Burial Circles	50.60%	50.60%	50.60%	
014	Omori Katsuyama Stone Circle	99.80%	99.80%	99.80%	
015	Takasago Burial Site	100.00%	100.00%	100.00%	
016	Kamegaoka Burial Site	43.00%	43.00%	43.00%	
017	Korekawa Site	100.00%	100.00%	100.00%	

Table 5 Number of meetings of the Preservation and Utilization Council for each component part (related with Indicator II-11)

	Name of the component part	FY 2019	FY 2020	FY 2021	FY 2021 Note
001	Odai Yamamoto Site	1	1	1	Council for the Maintenance and Utilization of Odai Yamamoto Site etc. of Sotogahama Town (10 August 2021).
002	Kakinoshima Site	4	1	1	Hakodate City Jomon Prehistoric Sites Preservation and Utilization Council (4 November 2021).
003	Kitakogane Site	0	1	0	Kitakogane Kaizuka Preservation and Utilization Council was postponed due to Covid-19.
004	Tagoyano Site	0	2	2	Excavation Advisory Committee for Historic Site Kamegaoka Sekki Jidai Iseki etc., (10 May 2021 and 11 October 2021)
005	Futatsumori Site	9	6	0	Futatsumori Kaizuka Preservation Management and Utilization Liaison Council was not organized.
006	Sannai Maruyama Site	1	7	6	Sannai Maruyama Site Preservation and Utilization Promotion Council (17 March 2022) Sannai Maruyama Site Excavation Advisory Committee (19 July 2021, 27 September 2021, and 3 March 2022) Sannai Maruyama Site Historic Site Maintenance Council (9 July 2021 and 22 September 2021).
007	Ofune Site	2	1	1	Hakodate City Jomon Prehistoric Sites Preservation and Utilization Council (4 November 2021)
008	Goshono Site	1	1	1	World Heritage Preservation and Utilization Council of Iwate Prefecture, Jomon Preservation and Utilization Working Group (8 February 2022)
009	Irie Site	1	1	1	Historic Site Irie Takasago Kaizuka Preservation and Utilization Council (canceled due to Covid-19) Historic Site Irie Takasago Kaizuka Preservation and Maintenance Council (21 July 2021)
010	Komakino Stone Circle	1	1	1	Aomori City Jomon World Heritage Preservation and Utilization Liaison Council (1 March 2022)
011	Isedotai Stone Circles	1	1	1	Isedotai Iseki Preservation and Utilization Liaison Council (7 March 2022)
012	Oyu Stone Circles	0	0	0	
013	Kiusu Earthwork Burial Circles	4	2	5	Kiusu Earthwork Burial Circles Preservation and Utilization Liaison Council (17 May 2021 and 14 March 2022) Historic Site Kiusu Earthwork Burial Circles Maintenance Basic Plan Advisory Committee (26 May 2021, 23 June 2021, and 26 October 2021)
014	Omori Katsuyama Stone Circle	9	4	7	Historic Site Omori Katsuyama Iseki Preservation and Utilization Council (28 May 2021, 16 June 2021, 16 July 2021, 17 December 2021, and 22 March 2021) Historic Site Omori Katsuyama Iseki Maintenance Advisory Committee (29 September 2021 and 22 March 2022)
015	Takasago Burial Site	1	1	1	Historic Site Irie Takasago Kaizuka Preservation and Utilization Council (canceled due to Covid-19) Historic Site Irie Takasago Kaizuka Preservation and Maintenance Council (21 July 2021)
016	Kamegaoka Burial Site	0	2	2	Excavation Advisory Committee of Kamegaoka Burial Site etc. (10 May 2021 and 11 October 2021)
017	Korekawa Site	4	3	2	Hachinohe City Korekawa Sekkijidai Iseki Preservation and Utilization Liaison Council (1 July 2021) Hachinohe City Korekawa Sekkijidai Iseki Maintenance Advisory Committee (7 March 2022)
Total		39	35	32	

Table 6 Study and research of the property (related with Indicator II-12)
【Status of implementation of study and research】

Content of study and research	Responsible organization	Duration of activity	Summary	Note	Financial assistance
Special Historic Site Sannai Maruyama Site, 45th archaeological excavation	Sannai Maruyama Jomon Culture Center	17 May 2021–22 October 2021	Archaeological excavations were carried out in the northern part of the Sannai Maruyama Site and to the north of the former candidate site for a city planning road.		Yes
Discussion of the basic plan for the improvement of Historic Site Kiusu Earthwork Burial Circles	Chitose City Board of Education	1 April 2021–21 December 2021	The principles and specific policies for archaeological remains preservation, visitor routes, vegetation management, infrastructure in the surrounding area, presentation, utilization, management, operation, etc. were discussed in preparation of Historic Site improvement work.		Yes
Archaeological excavation	Chitose City Board of Education	9 September 2021–23 November 2021	Archaeological excavation of the Kiusu Earthwork Burial Circle No.2 (re-excavation of the spot that was excavated in 1965) was carried out together with distribution survey within the Historic Site (outside the Earthwork Burial Circles) as part of Historic Site improvement work.		Yes
Survey to check the existence of archaeological remains as part of Historic Site improvement work	Hirosaki City Board of Education	6 May 2021–18 May 2021	Survey was carried out to check the existence of archaeological remains for installation of a drainage system and a fence to prevent visitors from dropping down the slope as part of the construction of visitor trails etc.	Refer to the annual monitoring report of the Omori Katsuyama Site in 2021.	None
Archaeological excavation to confirm the archaeological features	Tsugaru City Board of Education	1 July 2021–16 November 2021	Archaeological excavation was carried out to obtain supplementary information necessary for Historic Site improvement work.		Yes
Basic study on the pottery past of the Nambu region using volcanic glass analysis	Hachinohe City Buried Cultural Property Center, Korekawa Archaeological Institution, Hirosaki University Graduate school	April 2021–March 2022	Analysis of volcanic glass contained in the pottery of the early Jomon to the ancient period, unearthed in the Hachinohe area, was carried out. The movement of pottery that was produced in the same cultural area was corroborated.		None

【Reports and other documents containing research findings, etc.】

Title	Responsible organization	Format/volume	Printed copies	Language	Overview	Financial assistance
Funkawan Culture Vol.16	Date City Institute of Funkawan Culture	A4, 16 pages	8,000	Japanese	An abstract of a lecture that relates to the property is included.	None
Permanent exhibition catalogue of Futatsumori Site Museum	Shichinohe Town Board of Education	A4, 42 pages	400	Japanese/English	Catalogue of the permanent exhibition of the Futatsumori Shell Midden Museum.	None
Special Historic Site Sannai Maruyama Site Research Bulletin 3	Sannai Maruyama Jomon Culture Center	A4, 60 pages	500	Japanese	1 Archaeological excavation in 2020 2 Study note 3 Summary report of the results of special research promotion project 4 Preservation repair of artifacts unearthed from the Sannai Maruyama Site 5 Introduction of artifacts unearthed from the Sannai Maruyama Site on the occasion of re-classification project	None
Debriefing presentation of FY 2021 Special Historic Site Sannai Maruyama Site	Sannai Maruyama Jomon Culture Center	A4, 26 pages	Publication on the web	Japanese	Part 1: Report on the results of archaeological excavation Part 2: Report on the results of special research	None
Aomori Prefecture Buried Cultural Property Survey Report No. 631, Sannai Maruyama Site 45	Sannai Maruyama Jomon Culture Center	A4, 414 pages	370	Japanese	Report on the 40th to 43rd archaeological excavations carried out in FY 2016 – FY 2021.	Yes
Field briefing of Special Historic Site Sannai Maruyama Site 45th archaeological excavations.	Sannai Maruyama Jomon Culture Center	A3, 2 pages	150	Japanese	Results of the 45th archaeological excavation.	None
Maintenance basic plan for Historic Site Kiusu Earthwork Burial Circles	Chitose City Board of Education	A4, 86 pages	300	Japanese	The principles and specific policies for archaeological remains preservation, visitor routes, vegetation management, presentation, utilization, etc. are set out in preparation of Historic Site improvement work.	Yes
Report on archaeological excavations at the Historic Site Omori Katsuyama site: survey to confirm the archaeological remains associated with the Historic Site maintenance project	Hirosaki City Board of Education	A4, 121 pages	300	Japanese	Survey to check the existence of archaeological remains as part of the Historic Site improvement work conducted in FY 2019 – FY 2021.	Yes (national government subsidies)
Korekawa Iseki	Hachinohe City Buried Cultural Property Center, Korekawa Archaeological Institution	A4, 100 pages	500	Japanese	Catalogue of the special exhibition of the Korekawa Archaeological Institution in FY 2021.	None
Dressing: the people who adorn themselves'	Hachinohe City Buried Cultural Property Center, Korekawa Archaeological Institution	A4, 50 pages	500	Japanese	Catalogue of the autumn special exhibition of the Korekawa Archaeological Institution in FY 2021.	None
Research Bulletin, No. 11.	Hachinohe City Buried Cultural Property Center, Korekawa Archaeological Institution	A4, 45 pages	500	Japanese	A research report on artifacts unearthed from Korekawa Site.	None

Table 7 Research on related cultural properties (related with Indicator II-13)

Name	Author	Format/volume	Printed copies	Language	Summary	Funding etc.
Funkawan Culture, Vol. 16	Date City Institute of Funkawan Culture	A4, 16 pages	8,000	Japanese	Two survey reports etc. of buried cultural properties in the city.	None
Jomon World of Aomori	Sannai Maruyama Jomon Culture Center	A5, 50 pages	1,000	Japanese	Guidebook of the special exhibition, <i>The Jomon World of Aomori</i> .	None
The Archaeological Site of Ofune H, Hakodate City (2)	Hakodate City Board of Education, Southern Hokkaido History and Culture Foundation	A4, 110 pages	300	Japanese	Archaeological excavation report of the Ofune H site (in the buffer zone).	None
Ichinohe Town Annual Report on Cultural Properties 2020	Ichinohe Town Board of Education	A4, 26 pages	150	Japanese	Projects of the World Heritage Registration Promotion Office and the Goshono Jomon Museum are included.	None
Brief Survey to Verify the Content of Historic Site: Historic Site Korekawa Sekkijidai Iseki and Ichioji Iseki	Hachinohe City Buried Cultural Property Center, Korekawa Archaeological Institution	A4, 8 pages	300	Japanese	Research report on the Ichioji Iseki, which is located in the buffer zone.	Yes

Table 8 Number of technical staff of local governments in charge of study and research about each component part (related with Indicator II-14)

No.	Name of component part	Name of municipal government	FY 2019	FY 2020	FY 2021	Year-on-year change	Note
001	Odai Yamamoto Site	Sotogahama Town	1	1	1	0	Sotogahama Town Board of Education (Social Education Division)
002	Kakinoshima Site	Hakodate City	3	3	3	0	Hakodate City Board of Education (World Heritage Registration Promotion Section of Lifelong Learning Department Cultural Property Division)
007	Ofune Site						
003	Kitakogane Site	Date City	1	1	1	0	Date City Institute of Funkawan Culture (Date City Board of Education, Lifelong Learning Division)
004	Tagoyano Site	Tsugaru City	4	4	4	0	Tsugaru City Board of Education (Social Education and Culture Division)
016	Kamegaoka Burial Site						
005	Futatsumori Site	Shichinohe Town	1	1	1	0	Shichinohe Town Board of Education (World Heritage Nomination Section)
006	Sannai Maruyama Site	Aomori Prefecture	9	9	9	0	Aomori Board of Education (Sannai Maruyama Jomon Culture Center)
008	Goshono Site	Ichinohe Town	3	3	3	0	Ichinohe Town Board of Education (World Heritage Registration Promotion Section)
009	Irie Site	Toyako Town	2	2	2	0	Toyako Town Board of Education
015	Takasago Burial Site						
010	Komakino Stone Circle	Aomori City	3	3	3	0	Aomori City Board of Education (Cultural Property Division)
011	Isedotai Stone Circles	Kitaakita City	1	1	1	0	Kitaakita City Board of Education (Lifelong Learning Division)
012	Oyu Stone Circles	Kazuno City	2	2	2	0	Kazuno City Board of Education (Lifelong Learning Division), Oyu Stone Circles Museum
013	Kiusu Earthwork Burial Circles	Chitose City	3	5	5	0	Chitose City Board of Education (Buried Cultural Property Center)
014	Omori Katsuyama Stone Circle	Hirosaki City	2	3	2	-1	Hirosaki City Board of Education (Cultural Property Division)
017	Korekawa Site	Hachinohe City	5	5	5	0	Hachinohe City Buried Cultural Property Center (Korekawa Archaeological Institution)
—	Component parts in Hokkaido Prefecture	Hokkaido Prefecture	3	3	4	1	Hokkaido Government Department of Environment and Lifestyle (Bureau of Culture Jomon World Heritage Promotion Office) : 1 person Hokkaido Board of Education (Assets and Museums Division of Bureau of Lifelong Learning Promotion): 3 persons
—	Component parts in Aomori Prefecture	Aomori Prefecture	9	9	9	0	Aomori Prefectural Government Planning and Regulation Division (World Cultural Heritage Registration Promotion Division): 3 persons Aomori Prefecture Board of Education (Cultural Property Protection Division) : 6 persons
—	Component parts in Iwate Prefecture	Iwate Prefecture	3	3	3	0	Iwate Prefecture Department of Culture and Sports (Culture Promotion Division), Iwate Prefecture Board of Education (Lifelong Learning and Cultural Assets Division)
—	Component parts in Akita Prefecture	Akita Prefecture	5	5	7	2	Akita Prefecture Board of Education (Cultural Property Protection Section of Lifelong Learning Division)
Total			60	63	65	2	

Table 9 Number of public works contracts (related with Indicator III-1)

	Name of component part	FY 2019	FY 2020	FY 2021	FY 2021 Note
001	Odai Yamamoto Site	0	0	0	
002	Kakinoshima Site	1	1	0	Related to the construction of a port road of Usujiri Fishing Port.
003	Kitakogane Site	0	0	2	Two contracts for improvement of municipal road pavement.
004	Tagoyano Site	3	0	1	One road-related contract (prefectural government's project).
005	Futatsumori Site	0	0	2	Demolition of livestock barns for Futatsumori Site landscape conservation. Installation of water channel (agricultural drainage).
006	Sannai Maruyama Site	1	3	0	
007	Ofune Site	1	2	3	Related to the construction of the third section of the Osatsube road.
008	Goshono Site	0	1	1	Landslide prevention project (prefectural government's project).
009	Irie Site	1	0	0	
010	Komakino Stone Circle	0	0	0	
011	Isedotai Stone Circles	4	0	0	
012	Oyu Stone Circles	0	0	0	
013	Kiusu Earthwork Burial Circles	0	1	0	
014	Omori Katsuyama Stone Circle	0	0	1	
015	Takasago Burial Site	1	2	1	Retaining walls along the boundary of the Historic Site.
016	Kamegaoka Burial Site	2	0	1	One road-related project (prefectural government's project).
017	Korekawa Site	0	0	0	
Total		14	10	12	

Table 10 Number of development projects in the private sector (related with Indicator III-2)
 [Number of development permission application submissions]

Laws etc.	Provisions	FY 2019	FY 2020	FY 2021	FY 2021 Note
Law for the Protection of Cultural Properties	Article 93	4	1	1	Komakino Site (1): Komakino Site observation facility. Raising the top of the water intake pit.
	Article 125 (outside of the property)	3	4	5	Futatsumori Shell Mound (1). Komakino Site (1): cutting of a tree that had risk of collapse. Korekawa Stone Age Site (3).
City Planning Act	Article 29	0	0	0	
Act Concerning the Prevention of Disasters due to Collapse of Steep Slope	Article 7	0	0	0	
Act Concerning the Sediment-related Disaster Prevention Measures in Sediment-related Disaster Prone Areas	Article 10	0	0	0	
City Park Act (Aomori Prefecture City Park Ordinance)	Article 6	0	0	5	Sannai Maruyama Site (5)
Gravel Gathering Act	Article 16	1	1	1	Tagoyano Shell Mound-Kamegaoka Stone Age Site (1)
Forest Act	Article 10-2	2	0	0	
	Article 10-8				
	Article 34, paragraph				
	Article 34, paragraph				
	Article 34-2				
	Article 34-3				
River Act	Article 34-4	0	0	0	
	Article 20				
	Article 24				
	Article 25				
	Article 26, paragraph				
	Article 27, paragraph				
Chitose City Ordinance on Ordinary Rivers	Article 55, paragraph				
Chitose City Ordinance on Ordinary Rivers	Article 5	0	0	0	
Toyako Town Ordinance on Ordinary River Management	Article 5	0	0	0	
Hirosaki City Non-statutory Public Property Management Ordinance	Article 4	0	0	0	
Hakodate Ordinance on Ordinary River Management	Article 10	0	0	0	
Erosion Control Act (Erosion Control Law Enforcement Ordinance: Akita Prefectural Ordinance.)	Article 4	0	0	0	
Act Concerning the Establishment of Agriculture Promotion Areas	Article 15-2	2	3	2	Tagoyano Shell Mound-Kamegaoka Stone Age Site (2)
	Article 15-4				
Agricultural Land Act	Article 4, paragraph (1)	1	2	0	
	Article 5, paragraph (1)				
Road Act	Article 24	3	0	1	Kitakogane Shell Mound (0): 5 project permits were renewed (4 in 1 April 2017, 1 in 1 April 2018) for a period of five years. Sannai Maruyama Site (1): municipal road.
	Article 32				
Act Concerning Graveyards, Burials, etc.	Article 10	0	0	0	
Hakodate Municipal Cemetery Ordinance	Article 8	4	3	9	Kakinoshima Site (7): removal of graves etc. (not subject to HIA). Ofune Site (2): removal of graves (not subject to HIA).
Detailed Regulations for Enforcement of the Law on Cemetery Burial etc. of Hachinohe City	Article 3	0	0	0	
Fishing Ports and Fishing Grounds Act	Article 39	0	0	0	
Hokkaido Ordinance on the Conservation of the Natural Environment etc.	Article 30	0	0	0	
Total		20	14	24	

Table 11 Number of development projects in the private sector (related with Indicator III-2)

【Number of building confirmation requests】

Laws etc.	Provision	FY 2019	FY 2020	FY 2021	FY 2021 Note
Number of building confirmation requests		0	1	2	Sannai Maruyama Site (2)

Table 12 Number of-notification submission under the Landscape Ordinance (related with Indicator III-3)

【Number of notification submission】

	Name of component part	FY 2019	FY 2020	FY 2021	FY 2021 Note
001	Odai Yamamoto Site	0	3	2	
002	Kakinoshima Site	0	0	0	
003	Kitakogane Site	0	0	0	
004	Tagoyano Site	0	0	0	
005	Futatsumori Site	0	0	0	
006	Sannai Maruyama Site	0	0	2	
007	Ofune Site	0	0	0	
008	Goshono Site	1	3	0	
009	Irie Site	0	0	1	Renovation of the exterior walls of the Irie-Takasago Museum (color change). Application submitted on 10 September 2021, examination completed on 17 September 2021.
010	Komakino Stone Circle	0	0	0	
011	Isedotai Stone Circles	0	0	0	
012	Oyu Stone Circles	0	0	0	
013	Kiusu Earthwork Burial Circles	0	0	0	
014	Omori Katsuyama Stone Circle	0	0	0	
015	Takasago Burial Site	0	0	0	Same project as 009.
016	Kamegaoka Burial Site	0	0	0	
017	Korekawa Site	0	0	0	
Total		1	6	5	

Table 13-Number of prior notification submission under the Landscape Ordinance (related with Indicator III-3)
【Number of prior notification submission】

	Name of component part	FY 2019	FY 2020	FY 2021	FY 2021 Note
001	Odai Yamamoto Site	0	3	2	
002	Kakinoshima Site	0	0	0	
003	Kitakogane Site	0	0	0	
004	Tagoyano Site	0	0	0	
005	Futatsumori Site	0	0	0	
006	Sannai Maruyama Site	0	0	0	
007	Ofune Site	0	0	0	
008	Goshono Site	1	3	0	
009	Irie Site	0	0	1	
010	Komakino Stone Circle	0	0	0	
011	Isedotai Stone Circles	0	0	0	
012	Oyu Stone Circles	0	0	0	
013	Kiusu Earthwork Burial Circles	0	0	0	
014	Omori Katsuyama Stone Circle	0	0	0	
015	Takasago Burial Site	0	0	0	Same project as 009.
016	Kamegaoka Burial Site	0	0	0	
017	Korekawa Site	0	0	0	
Total		1	6	3	

Table 14: Heritage impact assessments in and around the buffer zone (related with Indicator III-4)
【Results of decisions on whether or not a detailed analysis of development activities etc. is required.】

Name of component part	Location	Overview of development etc.	Impact	Detailed analysis	Reasons for the decision taken	Record-keeping body
Odai Yamamoto Site	Buffer zone	Installation of electric pole	None	Not necessary	To relocate electrical poles in the vicinity of the component part.	Sotogahama Town Board of Education
Odai Yamamoto Site	Buffer zone	Removal of electric pole	None	Not necessary	To relocate electrical poles in the vicinity of the component part.	Sotogahama Town Board of Education
Odai Yamamoto Site	Buffer zone	Installation of prefabricated structure	None	Not necessary	There is no physical impact of the construction work on the component part. Although it is visible from a key viewpoint, it is a temporary structure that has no negative impact. It also meets the landscape development standards of the Sotogahama Town Landscape Plan.	Sotogahama Town Board of Education
Kitakogane Site	Buffer zone	Pavement improvement of municipal road	Minor	Not necessary	It is deemed that there will be no significant visual change.	Date City
Kitakogane Site	Buffer zone	Pavement improvement of municipal road	Minor	Not necessary	It is deemed that there will be no significant visual change.	Date City
Kitakogane Site	Buffer zone	Demolition of residential building	Minor	Not necessary	It is deemed that there will be no significant visual change.	Date City
Tagoyano Site, Kamegaoka Burial Site	Buffer zone	Installation of kiosk	None	Not necessary	The installation of the kiosk does not involve excavation for the construction of the foundation etc. It is deemed that there will be no impact on the archaeological remains, artefacts, or landform. The visual impact is limited.	Tsugaru City Board of Education
Futatsumori Site	Buffer zone	Irrigation channel maintenance	None	Not necessary	The existing irrigation channel near Viewpoint No. 3 is to be replaced, entailing only minor construction work. The scale of change is considered to be Level 0 according to the Heritage Impact Assessment Guidelines.	Shichinohe Town Board of Education
Sannai Maruyama Site	Buffer zone	Field maintenance	None	Not necessary	Impacts on the archaeological remains, landform, and location are negligible. There will be no visual impact.	Sannai Maruyama Jomon Culture Center
Sannai Maruyama Site	Buffer zone	Demolition of existing building and construction of new house	None	Not necessary	Impacts on the archaeological remains, landform, and location are negligible. There will be no visual impact.	Sannai Maruyama Jomon Culture Center
Sannai Maruyama Site	Buffer zone	Refurbishment of fence	None	Not necessary	Impacts on the archaeological remains, landform, and location are negligible. There will be no visual impact.	Sannai Maruyama Jomon Culture Center
Sannai Maruyama Site	Outside the buffer zone	New construction of office and fence	None	Not necessary	Impacts on the archaeological remains, landform, and location are negligible. There will be no visual impact.	Sannai Maruyama Jomon Culture Center
Sannai Maruyama Site	Buffer zone	Construction of house	None	Not necessary	Impacts on the archaeological remains, landform, and location are negligible. There will be no visual impact.	Sannai Maruyama Jomon Culture Center
Sannai Maruyama Site	Outside the buffer zone	Installation of advertisement	None	Not necessary	Impacts on the archaeological remains, landform, and location are negligible. There will be no visual impact.	Sannai Maruyama Jomon Culture Center
Sannai Maruyama Site	Buffer zone	Construction of house	None	Not necessary	Impacts on the archaeological remains, landform, and location are negligible. There will be no visual impact.	Sannai Maruyama Jomon Culture Center
Sannai Maruyama Site	Outside the buffer zone	New installation of mobile phone radio base station	None	Not necessary	Impacts on the archaeological remains, landform, and location are negligible. There will be no visual impact.	Sannai Maruyama Jomon Culture Center

Name of component part	Location	Overview of development etc.	Impact	Detailed analysis	Reasons for the decision taken	Record-keeping body
Sannai Maruyama Site	Buffer zone	Water supply and sewage work	None	Not necessary	Impacts on the archaeological remains, landform, and location are negligible. There will be no visual impact.	Sannai Maruyama Jomon Culture Center
Sannai Maruyama Site	Buffer zone	Repair of perimeter fence	None	Not necessary	Impacts on the archaeological remains, landform, and location are negligible. There will be no visual impact.	Sannai Maruyama Jomon Culture Center
Sannai Maruyama Site	Buffer zone	Removal of charging station	None	Not necessary	Impacts on the archaeological remains, landform, and location are negligible. There will be no visual impact.	Sannai Maruyama Jomon Culture Center
Sannai Maruyama Site	Buffer zone	Repair of outdoor staircase of Sannai Maruyama Jomon Culture Center	None	Not necessary	Impacts on the archaeological remains, landform, and location are negligible. There will be no visual impact.	Sannai Maruyama Jomon Culture Center
Komakino Stone Circle	Outside the buffer zone	Removal of standing tree (in relation to Article 10 (8) of the Forest Act)	Yes	Not necessary	Although the use of heavy machinery is expected to cause very slight changes to the archaeological remains, landform, etc., which amount to little alteration to the existing state. Not visible from key viewpoints, it does not have any visually disturbing elements.	Aomori City
Komakino Stone Circle	Outside the buffer zone	Removal of standing tree (in relation to Article 10 (9) of the Forest Act)	Yes	Not necessary	Although the use of heavy machinery is expected to cause very slight changes to the archaeological remains, landform, etc., which amount to little alteration to the existing state. Not visible from key viewpoints, it does not have any visually disturbing elements.	Aomori City
Komakino Stone Circle	Buffer zone	Raising of the upper part of the water intake pit at the observation deck	None	Not necessary	There are no physical or visual impacts on the archaeological remains, landform, etc. The existing state will be maintained appropriately. Not visible from key viewpoints, it does not have any visually disturbing elements.	Aomori City
Oyu Stone Circles	Buffer zone	Tree planting event of Kazuno City	None	Not necessary	If trees grow in the future, there will be visual change within the buffer zone. However, they are aimed at improving the visual landscape and will not have negative impact on the OUV.	Kazuno City Board of Education
Oyu Stone Circles	Buffer zone	Removal of wood-pole sign	None	Not necessary	The removal of signs will result in visual change within the buffer zone. However, it reduces modern structures and will not have negative impact on the OUV.	Kazuno City Board of Education
Omori Katsuyama Stone Circle	Buffer zone	Installation of water supply pipe for rest / convenience facility	None	Not necessary	There is no physical impact on the archaeological remains, landform, etc. of the component part. As the pipes are laid underground below the existing road and therefore not visible from Viewpoints No. 3 or No. 4. It is deemed that there is no negative visual impact. Based on the above, it is deemed that there is no negative impact on the OUV or attributes. It is to be categorized as Level 0 in accordance with Schedule 5 of the assessment guideline.	Hirosaki City Board of Education Cultural property division
Korekawa Site	Buffer zone	Archaeological excavation	None	Not necessary	Excavation is to be carried out by trench method. New excavation is kept to a minimum. The excavation spot is not visible from key viewpoints. Therefore, there is no impact on the component part.	Hachinohe City Buried Cultural Property Center, Korekawa Archaeological Institution

Table 14 Heritage impact assessments in and around buffer zones (related with Indicator III-4)

【Projects for which detailed analysis has been carried out.】

Name of component part	Location	Overview of development etc.	Methods of analysis	Results of analysis	Reasons of assessment	Record-keeping body
N/A						

Table 15 Number of visitors (related with Indicator VI-1)

【Component part】

Name of component part	April	May	June	July	August	September	October	November	December	January	February	March	Total	Average per month
001 Odai Yamamoto Site	Not counted	Not counted	Not counted	Not counted	Not counted	0	Not counted	Not counted	Not counted	Not counted	0	0	0	0
002 Kakinoshima Site				1,105	6,540	5,139	6,281	4,042	1,389	846	480	1,049	26,871	2,239
003 Kitakogane Site	264	292	389	2,840	1,880	Closed due to the impact of the Covid-19	6,576	2,062	Not counted	Not counted	Not counted	Not counted	14,303	1,192
004 Tagoyano Site	161	181	372	446	641	0	625	230	68	5	0	0	2,729	227
005 Futatsumori Site	564	671	819	712	1,024	Temporary closure	1,024	751	Winter closure	Winter closure	Winter closure	Winter closure	5,565	464
006 Sannai Maruyama Site	5,062	7,024	7,752	13,508	19,799	66	17,794	16,708	3,909	1,675	22	8	93,327	7,777
007 Ofune Site	724	1,541	2,217	4,848	5,297	0	5,672	3,500	722	225	152	784	25,682	2,140
008 Goshono Site	1,740	2,864	3,555	4,610	2,987	2,992	5,821	4,495	1,040	592	640	1,090	32,426	2,702
009 Irie Site	-	-	-	689	1,046	Closed due to the declaration of a state of emergency	1,983	829	Winter closure	Winter closure	Winter closure	Winter closure	4,547	379
010 Komakino Stone Circle	75	831	1,107	1,247	1,347	0	1,849	638	0	10	0	0	7,104	592
011 Isedotai Stone Circles	108	1,320	2,650	1,663	2,860	2,937	2,852	Winter closure	Winter closure	Winter closure	Winter closure	Winter closure	14,390	1,199
012 Oyu Stone Circles	735	2,267	1,534	3,802	5,883	5,217	5,806	3,002	486	280	106	353	29,471	2,456
013 Kiusu Earthwork Burial Circles	204	317	Closed	962	1,374	831	1,556	822	107	Winter closure	Winter closure	Winter closure	6,173	514
014 Omori Katsuyama Stone Circle	1,009	2,254	1,563	1,836	2,057	1,804	1,917	500	Winter closure	Winter closure	Winter closure	Winter closure	12,940	1,078
015 Takasago Burial Site	Refer to 009												—	—
016 Kamegaoka Burial Site	Refer to 004												—	—
017 Korekawa Site	0	0	0	0	0	0	0	0	0	0	0	0	0	0
Total	10,646	19,562	21,958	38,268	52,735	18,986	59,756	37,579	7,721	3,633	1,400	3,284	275,528	22,961

【Interpretation facility】

Name of component part	April	May	June	July	August	September	October	November	December	January	February	March	Total	Average per month
001 Odai Yamamoto Site	160	177	442	630	740	0	699	341	78	17	0	0	3,284	274
002 Kakinoshima Site	1,339	1,921	2,357	4,653	5,004	2,625	5,241	3,815	1,300	523	0	1,060	29,838	2,487
003 Kitakogane Site	264	292	389	2,840	1,880	Closed due to Covid-19	6,576	2,062	Winter closure	Winter closure	Winter closure	Winter closure	14,303	1,192
004 Tagoyano Site	162	215	502	501	661	0	917	560	107	42	0	0	3,667	306
005 Futatsumori Site	564	671	819	712	1,024	Temporary closure	1,024	751	279	113	Temporary closure	Temporary closure	5,957	496
006 Sannai Maruyama Site	5,062	7,024	7,752	13,508	19,799	66	17,794	16,708	3,909	1,675	22	8	93,327	7,777
007 Ofune Site	Refer to 002												—	—
008 Goshono Site	596	1,309	1,484	2,391	1,774	1,576	3,357	2,744	659	122	183	370	16,565	1,380
009 Irie Site	Closed due to Covid-19	Closed due to Covid-19	Closed due to Covid-19	689	1,046	Closed due to Covid-19	1,983	829	Winter closure	Winter closure	Winter closure	Winter closure	4,547	379
010 Komakino Stone Circle	1,035	1,251	1,649	1,975	2,116	0	2,860	1,604	621	266	0	782	14,159	1,180
011 Isedotai Stone Circles	404	1,511	1,691	1,901	3,375	3,319	3,453	1,717	427	110	188	250	18,346	1,529
012 Oyu Stone Circles	735	2,267	2,650	3,802	5,883	5,217	5,806	3,002	486	280	106	353	30,587	2,549
013 Kiusu Earthwork Burial Circles	60	22	0	295	236	67	658	375	93	50	24	94	1,974	165
014 Omori Katsuyama Stone Circle	599	506	327	701	335	Closed due to Covid-19	754	961	1,126	700	134	20	6,163	514
015 Takasago Burial Site	Refer to 009												—	—
016 Kamegaoka Burial Site	161	181	372	446	641	0	625	230	68	5	0	0	2,729	227
017 Korekawa Site	1,086	1,606	1,713	3,741	3,656	117	3,054	4,908	1,820	950	164	699	23,514	1,960
Total	12,227	18,953	22,147	38,785	48,170	12,987	54,801	40,607	10,973	4,853	821	3,636	268,960	22,413

Table 16 Number of visitors (related with Indicator VI-1)

【Changes in the number of visitors at each component part】

Name of component part	FY 2019	FY 2020	FY 2021	Year-on-year change
001 Odai Yamamoto Site	1,320	1,294	0	▲ 1,294
002 Kakinoshima Site	962	260	26,871	26,611
003 Kitakogane Site	11,358	8,663	14,303	5,640
004 Tagoyano Site	2,838	1,290	2,729	1,439
005 Futatsumori Site	671	660	5,565	4,905
006 Sannai Maruyama Site	192,336	75,584	93,327	17,743
007 Ofune Site	9,725	10,324	25,682	15,358
008 Goshono Site	23,072	19,589	32,426	12,837
009 Irie Site	3,830	258	4,547	4,289
010 Komakino Stone Circle	6,789	3,896	7,104	3,208
011 Isedotai Stone Circles	4,623	2,895	14,390	11,495
012 Oyu Stone Circles	19,938	13,627	29,471	15,844
013 Kiusu Earthwork Burial Circles	1,479	2,675	6,173	3,498
014 Omori Katsuyama Stone Circle	6,977	4,542	12,940	8,398
015 Takasago Burial Site	Refer to 009			0
016 Kamegaoka Burial Site	Refer to 004			0
017 Korekawa Site	3,614	119	0	▲ 119
Total	289,532	145,676	275,528	129,852

Table 17 Number of motor vehicles (related with Indicator VI-2)

【Number of motor vehicles at each component part】

Name of component part	FY 2019	FY 2020	FY 2021	Year-on-year change
001 Odai Yamamoto Site	0	0	10	10
002 Kakinoshima Site	41	41	41	0
003 Kitakogane Site	50	50	50	0
004 Tagoyano Site	6	6	11	5
005 Futatsumori Site	11	11	10	▲ 1
006 Sannai Maruyama Site	513	513	513	0
007 Ofune Site	15	15	15	0
008 Goshono Site	105	165	165	0
009 Irie Site	0	0	0	0
010 Komakino Stone Circle	44	44	10	▲ 34
011 Isedotai Stone Circles	0	0	0	0
012 Oyu Stone Circles	10	10	10	0
013 Kiusu Earthwork Burial Circles	3	32	37	5
014 Omori Katsuyama Stone Circle	30	30	30	0
015 Takasago Burial Site	0	0	0	0
016 Kamegaoka Burial Site	6	11	11	0
017 Korekawa Site	30	30	30	0
Total	864	958	943	-15

*Figures are the combined number of regular vehicles and buses.

【Changes in the number of visitors at each interpretation facility】

Name of interpretation facility	FY 2019	FY 2020	FY 2021	Year-on-year change
Sotogahama Oyama Furusato Shiryokan	1,320	1,294	3,284	1,990
Hakodate Jomon Culture Center	20,402	18,307	29,838	11,531
Kitakogane Site Information Center	11,358	8,663	14,303	5,640
Tsugaru City Jomon Dwelling Museum	3,374	1,384	3,667	2,283
Futatsumori Shell Midden Museum	—	—	5,957	5,957
Sannai Maruyama Jomon Culture Center	192,336	75,584	93,327	17,743
Hakodate Jomon Culture Center	—	—	—	0
Goshono Jomon Museum	9,062	6,085	16,565	10,480
Irie Takasago Museum	3,830	176	4,547	4,371
Aomori City Komakino Stone Circle Preservation Museum	16,765	9,438	14,159	4,721
Isedotai Jomon Museum	8,287	5,133	18,346	13,213
Oyu Stone Circles Museum	19,207	13,627	30,587	16,960
Chitose City Buried Cultural Properties Center	1,667	1,236	1,974	738
Susono District Physical Culture Exchange Center	9,829	9,511	6,163	▲ 3,348
Irie Takasago Museum	—	—	—	0
Tsugaru City Kizukuri Kamegaoka Archaeological Museum	2,838	1,290	2,729	1,439
Korekawa Archaeological Institution	28,948	15,739	23,514	7,775
Total	329,223	167,467	268,960	101,493

【Number of parking spaces at each interpretation facility】

Name of interpretation facility	FY 2019	FY 2020	FY 2021	Year-on-year change
Sotogahama Oyama Furusato Shiryokan	3	6	6	0
Hakodate Jomon Culture Center	41	41	41	0
Kitakogane Site Information Center	50	50	50	0
Tsugaru City Jomon Dwelling Museum	30	30	30	0
Futatsumori Shell Midden Museum	37	37	16	▲ 21
Sannai Maruyama Jomon Culture Center	513	513	513	0
Hakodate Jomon Culture Center	—	—	—	0
Goshono Jomon Museum	105	165	165	0
Irie Takasago Museum	40	40	40	0
Aomori City Komakino Site Preservation Museum	92	92	20	▲ 72
Isedotai Jomon Museum	124	124	124	0
Oyu Stone Circles Museum	20	50	50	0
Chitose City Buried Cultural Properties Center	38	38	38	0
Susono District Physical Culture Exchange Center	50	50	50	0
Irie Takasago Museum	—	—	—	0
Tsugaru City Kizukuri Kamegaoka Archaeological Museum	30	30	30	0
Korekawa Archaeological Institution	92	92	92	0
Total	1,265	1,358	1,265	-93

*Figures are the combined number of regular vehicles and buses.

Table 18 Number of motor vehicles (related with Indicator VI-2)

[Number of days when the parking spaces of each component part are fully used]

Unit: days

Name of component part	April	May	June	July	August	September	October	November	December	January	February	March	Total	Average per month
001 Odai Yamamoto Site	0	0	0	0	1	0	0	0	0	0	0	0	1	0
002 Kakinoshima Site	0	5	0	14	25	1	4	1	0	0	0	0	50	4
003 Kitakogane Site	0	0	0	0	0	0	0	0	0	0	0	0	0	0
004 Tagoyano Site	0	0	0	0	0	0	1	0	0	0	0	0	1	0
005 Futatsumori Site	0	0	0	0	0	0	0	0	Winter closure	Winter closure	Winter closure	Winter closure	0	0
006 Sannai Maruyama Site	0	0	0	0	0	0	0	0	0	0	0	0	0	0
007 Ofune Site	0	0	0	0	0	0	0	0	0	0	0	0	0	0
008 Goshono Site	0	0	0	0	0	0	0	0	0	0	0	0	0	0
009 Irie Site	—	—	—	—	—	—	—	—	Winter closure	Winter closure	Winter closure	Winter closure	0	0
010 Komakino Stone Circle	0	0	0	0	0	0	1	0	0	0	0	0	1	0
011 Isedotai Stone Circles	—	—	—	—	—	—	—	—	—	—	—	—	0	0
012 Oyu Stone Circles	0	0	1	0	0	0	0	0	0	0	0	0	1	0
013 Kiusu Earthwork Burial Circles	0	0	0	0	0	0	0	0	0	Winter closure	Winter closure	Winter closure	0	0
014 Omori Katsuyama Stone Circle	Not counted	Not counted	Not counted	Not counted	Not counted	Not counted	Not counted	Not counted	Not counted	Not counted	Not counted	Not counted	0	0
015 Takasago Burial Site	—	—	—	—	—	—	—	—	Winter closure	Winter closure	Winter closure	Winter closure	0	0
016 Kamegaoka Burial Site	0	0	0	0	0	0	1	0	0	0	0	0	1	0
017 Korekawa Site	0	0	0	0	0	0	0	0	0	0	0	0	0	0
Total	0	5	1	14	26	1	7	1	0	0	0	0	55	4

[Number of days when parking spaces of each Interpretation facility are fully occupied]

Unit: days

Name of component part	April	May	June	July	August	September	October	November	December	January	February	March	Total	Average per month
001 Odai Yamamoto Site	0	0	3	5	10	0	0	0	0	0	0	0	18	2
002 Kakinoshima Site	0	5	0	14	25	1	4	1	0	0	0	0	50	4
003 Kitakogane Site	0	0	0	0	0	0	0	0	0	0	0	0	0	0
004 Tagoyano Site	0	0	0	0	0	0	0	0	0	0	0	0	0	0
005 Futatsumori Site	0	0	0	1	0	0	0	0	0	0	0	0	1	0
006 Sannai Maruyama Site	0	0	0	0	0	0	0	0	0	0	0	0	0	0
007 Ofune Site	Refer to 002												0	0
008 Goshono Site	0	0	0	0	0	0	0	0	0	0	0	0	0	0
009 Irie Site	0	0	0	0	0	0	0	0	0	0	0	0	0	0
010 Komakino Stone Circle	0	0	0	3	0	0	2	1	1	1	0	0	8	1
011 Isedotai Stone Circles	0	0	0	0	0	0	0	0	0	0	0	0	0	0
012 Oyu Stone Circles	0	0	1	0	0	0	0	0	0	0	0	0	1	0
013 Kiusu Earthwork Burial Circles	0	0	0	0	0	0	0	0	0	0	0	0	0	0
014 Omori Katsuyama Stone Circle	Not counted	Not counted	Not counted	Not counted	Not counted	Not counted	Not counted	Not counted	Not counted	Not counted	Not counted	Not counted	0	0
015 Takasago Burial Site	Refer to 009												0	0
016 Kamegaoka Burial Site	0	0	0	0	0	0	0	0	0	0	0	0	0	0
017 Korekawa Site	0	0	0	1	0	0	0	1	0	0	0	0	2	0
Total	0	5	4	24	35	1	6	3	1	1	0	0	80	7

Table 19 State of installation of convenience facilities etc. (related with Indicator VI-3)

【State of installation of convenience facilities etc. at each component part】 Not yet installed: — / Installed: ○

	Name of component part	Resting room	Toilet	Nursing facility	Facilities for the elderly	Communication environment	Note
001	Odai Yamamoto Site	—	○	—	—	○	A prefabricated structure for body temperature inspection and disinfection has been installed.
002	Kakinoshima Site	○	○	○	○	—	Accessible toilet, rental wheelchairs are available.
003	Kitakogane Site	—	—	—	—	—	
004	Tagoyano Site	—	○	○	—	—	
005	Futatsumori Site	○	○	—	—	—	An information booth has been set up near the component part.
006	Sannai Maruyama Site	○	○	○	○	—	
007	Ofune Site	○	○	○	○	—	Accessible toilet, rental wheelchairs are available.
008	Goshono Site	○	○	—	—	○	Accessible toilet, rental wheelchairs are available.
009	Irie Site	—	○	—	—	—	
010	Komakino Stone Circle	○	○	○	—	—	Accessible toilet.
011	Isedotai Stone Circles	—	—	—	—	—	
012	Oyu Stone Circles	—	—	—	—	—	Rental wheelchairs and baby strollers are available
013	Kiusu Earthwork Burial Circles	—	○	—	—	—	Toilets: available April-November (temporary).
014	Omori Katsuyama Stone Circle	—	○	—	—	—	Temporary toilets are available. Planned to be installed in the future.
015	Takasago Burial Site	—	—	—	—	—	
016	Kamegaoka Burial Site	—	○	○	—	—	
017	Korekawa Site	○	○	—	○	—	Currently closed.

【State of installation of convenience facilities etc. at each interpretation facility】 -Not yet installed:—/Installed: ○

	Name of component part	Resting room	Toilet	Nursing facility	Facilities for the elderly	Communication environment	Note
001	Odai Yamamoto Site	—	○	—	—	○	
002	Kakinoshima Site	○	○	○	○	○	Accessible toilet, rental wheelchairs, and baby strollers are available.
003	Kitakogane Site	○	○	—	—	○	Accessible toilet, rental wheelchairs are available.
004	Tagoyano Site	○	○	—	—	—	
005	Futatsumori Site	○	○	○	○	○	Futatsumori Shell Midden Museum opened on 2 April 2021.
006	Sannai Maruyama Site	○	○	○	○	○	Wi-Fi is available in the interpretation facility.
007	Ofune Site	○	○	○	○	○	Accessible toilet, rental wheelchairs and baby strollers are available.
008	Goshono Site	○	○	—	—	○	Accessible toilet, rental wheelchairs are available.
009	Irie Site	○	○	—	—	—	
010	Komakino Stone Circle	○	○	○	○	○	Accessible toilet, rental wheelchairs, and baby strollers are available. It is also equipped with wheelchair lifts.
011	Isedotai Stone Circles	—	○	—	○	○	
012	Oyu Stone Circles	—	○	○	—	○	Accessible toilet, rental wheelchairs, and baby strollers are available.
013	Kiusu Earthwork Burial Circles	—	○	—	○	○	Accessible toilet, rental wheelchairs, and free-Wi-Fi are available.
014	Omori Katsuyama Stone Circle	—	○	—	—	—	No interpretation facility is in place yet, but exhibitions are held in a section of the Susono District Physical Culture Exchange Center. An interpretation facility is planned to be built in the future.
015	Takasago Burial Site	○	○	—	—	—	
016	Kamegaoka Burial Site	○	○	—	—	—	
017	Korekawa Site	○	○	○	○	○	Accessible toilet, rental wheelchairs, and baby strollers are available

Table 20 State of installation of convenience facilities etc. (related with Indicator VI-3)

【State of installation of guidance signs in the region】

	Name of component part	FY 2019	FY 2020	FY 2021	Year-on-year change
001	Odai Yamamoto Site	0	8	8	0
002	Kakinoshima Site	0	0	21	21
003	Kitakogane Site	4	4	11	7
004	Tagoyano Site	0	1	1	0
005	Futatsumori Site	14	15	30	15
006	Sannai Maruyama Site	67	67	67	0
007	Ofune Site	15	15	26	11
008	Goshono Site	3	3	3	0
009	Irie Site	2	2	2	0
010	Komakino Stone Circle	19	19	19	0
011	Isedotai Stone Circles	9	9	9	0
012	Oyu Stone Circles	8	8	8	0
013	Kiusu Earthwork Burial Circles	0	2	3	1
014	Omori Katsuyama Stone Circle	3	3	3	0
015	Takasago Burial Site	2	2	2	0
016	Kamegaoka Burial Site	0	1	1	0
017	Korekawa Site	29	29	29	0
	Total	175	188	243	55

Table 21 Training workshops about the property (related with Indicator VII-1)

Name	Date	Operating body	Number of participants	Summary
"Jomon Prehistoric Sites in Northern Japan" World Heritage List Inscription Commemorative Forum 2022	Available online since March 2022	Headquarters for World Heritage Registration Promotion for Jomon Prehistoric Sites	11,431	Forum (online) on the Outstanding Universal Value and significance of the Jomon Prehistoric Sites in Northern Japan, and the latest information on the component parts.
"Jomon Prehistoric Sites in Northern Japan" World Heritage List Inscription Commemorative Forum (Hokkaido)	4 December 2021	Headquarters for World Heritage Registration Promotion for Jomon Prehistoric Sites	80	A forum was held on the theme, World Heritage inscription and the future, with the aim of deepening understanding of the Jomon Prehistoric Sites in Northern Japan.
"Jomon Prehistoric Sites in Northern Japan" World Heritage List Inscription Promotion Aomori Forum	Available online since March 2022	Headquarters for World Heritage Registration Promotion for Jomon Prehistoric Sites	1,577	Talk event (online) about the past and future about the inscription of the Jomon Prehistoric Sites in Northern Japan as a World Heritage property.
"Jomon Prehistoric Sites in Northern Japan" World Heritage List Inscription Promotion Commemorative Forum (Iwate Prefecture)	13 March 2022	Headquarters for World Heritage Registration Promotion for Jomon Prehistoric Sites	150	Forum on the Jomon Prehistoric Sites in Northern Japan.
"Jomon Prehistoric Sites in Northern Japan" World Heritage List Inscription Promotion Akita Forum	Available online since March 2022	Headquarters for World Heritage Registration Promotion for Jomon Prehistoric Sites	196	Forum on the Jomon Prehistoric Sites in Northern Japan (online).
"Jomon in the North" Panel Exhibition (Iburi Region)	20 July–10 August 2021, 1–10 November 2021, 25 and 26 December 2021, 11–20 Jan 2022, 11–23 Feb 2022.	Hokkaido Iburi General Promotion Bureau	2,600	Interpretive panels on the Jomon Prehistoric Sites in Northern Japan and other Jomon sites that exist in the Iburi region were displayed at public facilities and roadside stations (once in each of Noboribetsu City, Abira Town, and Sobetsu Town, twice in Muroran City).
Iburi Jomon Tour	23 October 2021	Hokkaido Iburi General Promotion Bureau	40	To have residents of the Iburi region visit and experience the Kitakogane Site, Irie Site, and Takasago Burial Site, with a view to deepening their understanding of the Jomon culture and identifying issues, if any, to make the archaeological sites more attractive.
Ishikari Jomon Relay Panel Exhibition	15 October–21 December 2021	Hokkaido Ishikari Promotion Office	—	To transmit the attractiveness of the Jomon culture widely and increase the number of new Jomon fans, panel exhibitions were held in a relay style at nine venues in seven cities, towns, and villages in cooperation with tourist facilities and Michi-no-Eki (lit. "roadside stations") in the Ishikari region.
Ishikari Jomon Panel Exhibition in Maruhiko Art Space <i>Nagomi</i>	1–28 February 2022.	Hokkaido Ishikari Promotion Office	—	A panel exhibition was held at Maruhiko Art Space <i>Nagomi</i> to transmit the attractiveness of the Jomon culture widely and increase the number of new Jomon fans.
"Jomon in the North" Panel Exhibition (at 3 venues in Hokkaido)	12 October - 8 November 2021, 11 December - 23 December 2021, 16 February - 27 February 2022	Hokkaido Environment and Life Department, Culture Bureau, Cultural Promotion Division	13,400	
"Jomon in the North" Panel Exhibition (at 3 venues in Hokkaido)	15–16 April 2021, 13–14 July 2021, 1–4 October 2021.	Hokkaido Environment and Life Department, Culture Bureau, Cultural Promotion Division	1,020	At Shinhidaka Town, Obihiro City, and Nemuro City.
"Jomon in the North" Fun Festa	19–21 March 2022	Hokkaido Environment and Life Department, Culture Bureau, Cultural Promotion Division	6,500	
Jomon "Experiential" World Heritage Lecture	April 2021–March 2022	Aomori Prefecture	785	Lecture about World Cultural Heritage in general (at 14 schools and other locations in Aomori Prefecture).
Elementary School Children's Project to Experience Jomon Sites and Local Cultural Properties	June 2021–December 2021.	Aomori Prefectural Board of Education	84	Lectures about the Jomon Prehistoric Sites in Northern Japan and other local cultural properties and hands-on experience program of archaeological excavation and survey.

Name	Date	Operating body	Number of participants	Summary
Jomon Outing Stamp Rally	June 2021–October 2021	Aomori Prefecture	2,677	Stamp rally, using smartphones with GPS function to visit Jomon sites and facilities in eight areas within Aomori Prefecture.
World Heritage Traveling Panel Exhibition	29 June–13 July 2021 at Iwate Prefectural Government, 19 July–10 August 2021 at Iwate Prefecture Tokyo Office Ginga Plaza, 6–7 November 2021 at AEON TOWN Kamaishi	Iwate Prefecture	—	Panel exhibitions to communicate the value of the Jomon Prehistoric Sites in Northern Japan etc.
Jomon <i>Wakuwaku</i> Day	19, 20, 26, 27 February 2022	Iwate Prefecture	730	Panel displays etc., commemorating the inscription on the World Heritage List.
Delivery Lecture (World Heritage)	24 June 2021	Akita Prefecture Board of Education	20	Lecture on the World Heritage and the Jomon Prehistoric Sites in Northern Japan (at Oga City Katanishi Junior High School).
Delivery Lecture (World Heritage)	24 September 2021	Akita Prefecture Board of Education	20	Lecture on the World Heritage and the Jomon Prehistoric Sites in Northern Japan (at Akita Prefecture Tourism Promotion Council).
Delivery Lecture (World Heritage)	5 November 2021	Akita Prefecture Board of Education	20	Lecture on the World Heritage and the Jomon Prehistoric Sites in Northern Japan (at school for the deaf).
Joint Fair of World Natural Heritage Shirakami-Sanchi and World Cultural Harigage Jomon Prehistoric Sites in Northern Japan	7 November 2021	Akita Prefecture Kazuno Regional Promotion Bureau, Kitaakita Regional Promotion Bureau, Yamamoto Regional Promotion Bureau and Kazuno City Board of Education, Kitaakita City Board of Education	150	Display of excavated artifacts and posters of the Jomon Prehistoric Sites in Northern Japan and small delivery lecture (at Akita community center ALVE).
Delivery Lecture (World Heritage)	11 January 2022	Akita Prefecture Board of Education	15	Lecture on the World Heritage and the Jomon Prehistoric Sites in Northern Japan (at Izumi Ward senior citizens' class).
Delivery Lecture (World Heritage)	26 January 2022	Akita Prefecture Board of Education	61	Lecture on the World Heritage and the Jomon Prehistoric Sites in Northern Japan (at Nikaho City lecture about local history for citizens).
Delivery Lecture (World Heritage)	15 February 2022	Akita Prefecture Board of Education	25	Lecture on the World Heritage and the Jomon Prehistoric Sites in Northern Japan (at Hodono area women's class).
Delivery Lecture (World Heritage)	16 February 2022	Akita Prefecture Board of Education	15	Lecture on the World Heritage and the Jomon Prehistoric Sites in Northern Japan (Kawajiri area senior citizens' class).
Guide Training Workshop	27 June 2021	Odai Yamamoto site promotion team	8	Guide training course for communicating the value of the Odai Yamamoto site.
Collection Exhibition, Jomon Culture of Hakodate	1 April–14 June 2021	Hakodate City Museum	3,423	Exhibition on the theme of Hakodate's Jomon culture, displaying archaeological materials that have been unearthed within Hakodate City in the custody of the Hakodate City Museum.
Spring Jomon Dyeing	24 April 2021	Hakodate City Jomon Cultural Exchange Center	9	Dyeing of cloth using native plants that grow around the Jomon Cultural Exchange Center.
Spring Nature Observation Event	15 May 2021	Hakodate City Jomon Cultural Exchange Center	8	Based on data of plant remains excavated from local Jomon sites of the Minami Kayabe area, participants observed plants that are thought to have been eaten by Jomon people.
Hakodate City Delivery Lecture, "Toward the World Heritage List Inscription of the Jomon Prehistoric Sites in Northern Japan"	3 June 2021	Hakodate City University for the Elderly at Aoyanagi	86	Lecture by a curator of the Municipal Board of Education on the inscription of the Jomon Prehistoric Sites in Northern Japan on the World Heritage List.
Hakodate City Delivery Lecture, "Toward the World Heritage List Inscription of the Jomon Prehistoric Sites in Northern Japan"	8 June 2021	Hakodate City Kameda Senior Citizens' University	121	Lecture by a curator of the Municipal Board of Education on the inscription of 'Jomon Prehistoric Sites in Northern Japan' on the World Heritage List.
Antler Fishhook Making and Sea Fishing Experience	12 and 19 June 2021	Hakodate City Jomon Cultural Exchange Center	10	Sea fishing experience using hooks carved from antler plates at Usujiri Fishing Port.

Name	Date	Operating body	Number of participants	Summary
2021 Special exhibition, "Ofune, Kakinoshima, and World Heritage"	26 June–26 September 2021	Hakodate City Museum	3,238	Exhibition on the Jomon Prehistoric Sites in Northern Japan, mainly of archaeological materials that have been excavated from the component parts located in Hokkaido, including Ofune and Kakinoshima Historic Sites.
Lecture, "Jomon Culture and World Heritage at Ofune and Kakinoshima"	29 June 2021	Hakodate City Kameda Senior local residents University	110	Lecture by museum curators on the Jomon Prehistoric Sites in Northern Japan.
Lecture, "Hakodate's Jomon Culture and World Heritage"	1 July 2021	Hakodate City University for the Elderly at Aoyanagi	78	Lecture by museum curators on Hakodate's Jomon culture and the Jomon Prehistoric Sites in Northern Japan.
Exhibition Interpretation Seminar, "Ofune, Kakinoshima, and World Heritage"	7 July, 7 August and 18 August 2021	Hakodate City Museum	30	Museum curators provide interpretation about the 2021 special exhibition, Ofune and Kakinoshima Historic Sites and World Heritage.
Special Exhibition, "Jomon Prehistoric Sites in Northern Japan Aiming for World Heritage List Inscription"	19–27 July 2021	Hakodate City Board of Education	—	Display of panels introducing the Jomon Prehistoric Sites in Northern Japan etc. at the Civic Hall of the Hakodate City Hall, with a view to building momentum among local residents for the inscription of the Jomon Prehistoric Sites in Northern Japan on the World Heritage List (the number of visitors was not counted).
Lecture, "Hakodate's Jomon Culture and World Heritage"	21 July 2021	Hakodate City University for the Elderly, Yukawa.	117	Lecture by museum curators on Hakodate's Jomon culture and the Jomon Prehistoric Sites in Northern Japan.
Pottery Pattern-Imprinting Experience	24 July 2021	Hakodate City Jomon Cultural Exchange Center	13	Participants experience the imprinting of cord patterns on clay with cords made from fibers of <i>Boehmeria nivea</i> and compare them with those of the authentic Jomon pottery.
Jomon Museum Talk Event, "Ofune, Kakinoshima, and World Heritage"	25 July 2021	Hakodate City Museum	40	Lecture by Professor Emeritus Suzuki Mitsuo of Tohoku University at the Hakodate City community center on the theme of the Jomon culture and the chestnut.
Opening Ceremony of the Kakinoshima Site, Just Inscribed on the World Heritage List	28 July 2021	Hakodate City Board of Education	—	Celebration of the inscription of the Jomon Prehistoric Sites in Northern Japan on the World Heritage List and the opening to the public of the Kakinoshima Site, where visitor infrastructure was completed (the number of visitors was not counted).
Special Exhibition, "Congratulations on the World Heritage List Inscription of the Jomon Prehistoric Sites in Northern Japan"	28 July–13 August 2021	Hakodate City Board of Education	—	Display of panels about the Jomon Prehistoric Sites in Northern Japan etc. at the Civic Hall of the Hakodate City Hall to make a wide announcement of the successful inscription on the World Heritage List (the number of visitors was not counted).
Summer Vacation Research Program, "Let's Make Fishhooks out of Deer Antlers Like Jomon"	1 August 2021	Hakodate City Museum	10	Hands-on program for elementary school students to carve fishhooks out of antler plates.
Special Exhibition, "World Cultural Heritage Ofune Site and Kakinoshima Site"	3 August–3 October 2021	Hakodate City Jomon Cultural Exchange Center	7,737	To raise awareness about the background and characteristics of the Jomon culture in southern Hokkaido and northern Tohoku, inscribed on the World Heritage List.
Summer Vacation Research Program, "Let's Make Arrowheads out of Obsidian"	5 August 2021	Hakodate City Museum	15	Hands-on program for elementary school students to make arrowheads out of obsidian and test-shoot arrows with them.
Summer Vacation Research Program, "Let's Make Jomon Clay Figurines"	6 August 2021	Hakodate City Museum	10	Hands-on program for elementary school students to make clay figurines.
Jomon Experience, "Let's Make Animal-shaped Clay Figurines"	14 and 15 August 2021	Hakodate City Jomon Cultural Exchange Center	20	Hands-on program to make animal-shaped clay figurines.
Special Exhibition, "Congratulations on the World Heritage List Inscription of the Jomon Prehistoric Sites in Northern Japan"	28 August–14 September 2021	Hakodate City Board of Education	15,620	Display of panels to introduce the Jomon Prehistoric Sites in Northern Japan etc. at supermarkets in the city to raise awareness of citizens about the successful inscription on the World Heritage List.
Jomon Pottery Making	4 September and 2 October 2021	Hakodate City Jomon Cultural Exchange Center	6	Participants experienced making Jomon pottery on the model of artifacts excavated from Jomon sites in Hakodate city. Pots are dried for a month and then burned in the field.
Lobby Exhibition, "Jomon Sites in Hakodate"	7 October 2021–31 March 2022	Hakodate City Museum	4,175	Exhibits of archaeological materials excavated in the city that are stored at the Hakodate City Museum on the theme of Hakodate's Jomon culture.
Jomon Week in Hakodate	9–17 October 2021	Hakodate City Board of Education, Hokkaido Oshima General Promotion Bureau, Hokkaido Newspaper Hakodate Branch	—	Lectures, symposia, and workshops are held at various locations in the city (the number of visitors was not counted).

Name	Date	Operating body	Number of participants	Summary
Autumn Nature Observation Event	16 October 2021	Hakodate City Jomon Cultural Exchange Center	21	Based on data of plant remains excavated from local Jomon sites of the Minami Kayabe area, participants observed and gathered plants that are thought to have been eaten by Jomon people.
Let's Make Jomon Stone Tools!	6 November 2021	Hakodate City Jomon Cultural Exchange Center	8	Participants actually manufactured stone tools out of obsidian to experience the craftsmanship of Jomon people.
Jomon Lecture	30 October, 27 November and 25 December 2021.	Hakodate City Jomon Cultural Exchange Center	11	Jomon classroom by Mr Chiharu ABE, advisor to the Foundation for the Promotion of History and Culture of Southern Hokkaido.
Autumn Jomon Dyeing	20 November 2021	Hakodate City Jomon Cultural Exchange Center	5	Dyeing of cloth using native plants that grow around the Jomon Cultural Exchange Center.
Special Exhibition, "Congratulations on the World Heritage List Inscription of the Jomon Prehistoric Sites in Northern Japan"	9–21 December 2021	Hakodate City Board of Education	1,585	Display of panels introducing the Jomon Prehistoric Sites in Northern Japan at department stores in the city to raise awareness of citizens about the successful inscription on the World Heritage List.
Jomon Experience--Making Antler Accessories	8 and 9 January 2022	Hakodate City Jomon Cultural Exchange Center	14	Participants manufactured original mobile phone lanyards, processing deer antlers.
Archaeological Site Study Debriefing	12 March 2022	Hakodate City Jomon Cultural Exchange Center	9	The results of the archaeological excavations carried out in the city in FY2021 were reported, and excavated artifacts were exhibited.
Hakodate Jomon Quiz Rally	23–31 March 2022	Hakodate City Jomon Cultural Exchange Center	99	"Quiz rally" event to raise people's interest in Jomon culture as visitors make a tour of the museum, answering questions related to Jomon culture, .
Jomon Kids' Festa	11 July and 16 October 2021	Date City Board of Education	140	Experiential learning event for elementary school children in the city.
Citizens' Lecture, "Let's Tour the History and Culture of Date City"	3, 5, 6 November 2021	Date City Board of Education	47	Bus tour to visit cultural properties in the city, including Kitakogane Site.
Restored Shell Mound Repair Project	1 April–30 November 2021	Date City Board of Education	25	Participatory program to repair three-dimensional display of a shell mound, using shells donated by local residents.
Panel Exhibition of the Jomon Prehistoric Sites in Northern Japan	17 April–22 August 2021	Date City Board of Education	2,297	Display of panels about the Jomon Prehistoric Sites in Northern Japan.
Live Viewing of the World Heritage Committee	27 July 2021	Date City Board of Education	27	Viewing of the World Heritage Committee session with the participation of organizations related to Jomon in the city.
Delivery Lecture, "Cultural Properties of Tsugaru"	8 June–28 October 2021	Tsugaru City Board of Education	355	Delivery lectures on the Jomon Prehistoric Sites in Northern Japan and their component parts (five elementary and junior high schools in the city).
Summer Vacation Hands-on Workshop, "Miniature Pottery-Making Experience"	7 and 8 August 2021	Tsugaru City Board of Education	51	Hands-on program to learn the value of the property through pottery-making experience (for elementary and junior high school students in the city).
Jomon Site Information Center	23 April–30 November 2021	Tsugaru City Board of Education	—	Installation of an information center at a temporary car park adjacent to the property and the display of panels to explain the value of the property at the center.
Aomori Tourism Creation School	23 August–22 November 2021	Hirotsuki University	15	Training workshop for volunteer guides for archaeological sites in Tsugaru City and Hirotsuki City and participants of the local community vitalization cooperation squad program to learn from latest research and innovative attempts at archaeological sites.
Training at the Museum for Guides for Tsugaru Jomon Sites	29 September 2021	Tsugaru City Board of Education	10	Training of the volunteer guides of the Tsugaru Jomon guides to improve their skill to provide explanation of the exhibits at the museum.
Hometown Training	6 August 2021	Shichinohe Town Board of Education	12	Training for new and newly-assigned teachers of Shichinohe Town.
"Jomon Prehistoric Sites in Northern Japan" World Heritage List Inscription Commemorative Panel Exhibition	3 August 2021–31 March 2022	Shichinohe Town Board of Education	3,141	Display of panels at the special exhibition room of the Futatsumori Shell Mound Museum in celebration of the successful inscription of the Jomon Prehistoric Sites in Northern Japan on the World Heritage List.
Futatsumori Shell Mound Museum Hands-on Program	June 2021–January 2022	Shichinohe Town Board of Education	147	Hands-on program for visitors to manufacture comma-shaped beads and plate-attached mobile phone lanyards.

Name	Date	Operating body	Number of participants	Summary
World Heritage List Inscription Commemorative Symposium, "From World Heritage List Inscription to the Future -- Sannai-Maruyama	20 November 2021	Sannai Maruyama Jomon Culture Center, etc.	120	Keynote speech, presentation on various activities, and panel discussion in celebration of the successful World Heritage List inscription.
FY 2021 Field Briefing of the 45th Archaeological Excavation	16 October 2021	Sannai Maruyama Jomon Culture Center	35	On-site explanation of the results of the FY2021 archaeological excavations.
San-maru Jomon Experience, "Let's Try Archaeological Excavation"	30 July 2021	Sannai Maruyama Jomon Culture Center	15	Program to experience conducting archaeological excavation on the site.
San-maru Jomon Experience, "Making Jomon Village in Miniature Garden"	21 August 2020	Sannai Maruyama Jomon Culture Center	9	Program to make a Jomon village in a miniature garden.
San-maru Jomon Experience, "Let's Make Clay Figures"	22 January 2022	Sannai Maruyama Jomon Culture Center	10	Hands-on program to make clay figurines.
San-maru Jomon Experience, "Making Replicas of Clay figurines"	30 October 2021	Sannai Maruyama Jomon Culture Center	7	Hands-on program to make clay figurines (replicas).
San-maru Jomon Studies Lecture 1	8 August 2021	Sannai Maruyama Jomon Culture Center	17	Presentation of unearthed artifacts associated with festivals with explanation about the spiritual culture of the Jomon period and its development.
San-maru Jomon Studies Lecture 2	21 November 2021	Sannai Maruyama Jomon Culture Center	26	Explanation about the use of aquatic resources in the Jomon period in Aomori Prefecture based on the unearthed fish bones and fishing implements.
San-maru Jomon Studies Lecture 3	13 November 2021	Sannai Maruyama Jomon Culture Center	15	Explanation about the change of society during the Jomon period, which lasted for more than 10,000 years, based on the characteristics of the archaeological remains and artifacts.
San-maru Jomon Studies Lecture 4	2 October 2021	Sannai Maruyama Jomon Culture Center	11	Explanation about the characteristics of exchange and trade in the Jomon period and their change in different stages, based on unearthed objects such as jade and obsidian.
San-maru Jomon Studies Lecture 5	16 October 2021	Sannai Maruyama Jomon Culture Center	11	Explanation about the characteristics of wood use in Aomori Prefecture from the Jomon to early modern periods, based on unearthed wood materials.
Special Exhibition, "Jomon World of Aomori"	17 July–28 November 2021	Sannai Maruyama Jomon Culture Center	27,089	Introduction of artifacts that have been unearthed from the Jomon sites in Aomori Prefecture.
Special Exhibition, "Jomon People and Numbers"	22 January–31 March 2022	Sannai Maruyama Jomon Culture Center	242	Interpretation about the spiritual world of the Jomon period, based on that fact that many of the unearthed artifacts from the Jomon period are "imitations" of practical tools.
FY 2021 Briefing on Special Historic Site Sannai Maruyama Site	12 March 2022	Sannai Maruyama Jomon Culture Center	710 (numbers of video views)	Posting of videos on YouTube about the results of archaeological excavations and special research promotion projects and publication of documents on the official website.
Archaeological Excavation Flash Report Exhibition, "San-maru Flash Report Exhibition! 2021"	12–31 March 2022	Sannai Maruyama Jomon Culture Center	0	Exhibition to investigate the dating, scale, and structure of the "ditch-like" archaeological remains at the northern periphery of the archaeological site, which have been studied in recent years.
Jomon Fashion Show	13 March 2022	Sannai Maruyama Jomon Culture Center	1,773 (numbers of video views)	Fashion show in which models wear clothes and ornaments that are made on the model of artifacts that have been unearthed from the Sannai Maruyama Site and other Jomon sites.
Let's Make a Diorama of a Pit Dwelling!	7 August 2021	Hakodate City Jomon Cultural Exchange Center	11	Making of a scale model of the pit dwelling at the Ofune site.
Goshono Jomon WeeeeKs	16 October–7 November 2021	Ichinohe Town, Iwate Prefecture Northern Regional Development Bureau	2,618	A series of events to deepen people's understanding of the Goshono site and Jomon culture, including walking event, stargazing event, fireworks, Jomon School Lunch Day, Jomon and Japan lacquer ware workshop, archaeologist experience, local performing arts.
Local Coordination Forum in Celebration of the World Heritage List Inscription of the Goshono Site	22 January 2022	The Iwate University Center for Hiraizumi Studies, Ichinohe Town Board of Education, Goshono Jomon Museum	100	Forum to disseminate the value of the Goshono site and the significance of World Heritage List inscription widely within and outside Iwate Prefecture and discuss the protection and utilization of the World Heritage properties in Iwate Prefecture.
Panel Exhibition on the Prehistoric Jomon Sites in Northern Japan	November 25–December 22, 2021, January 9, 2022	Toyako Town Board of Education	—	Display of panels on the Jomon Prehistoric Sites in Northern Japan in celebration of World Heritage List inscription at a library and the venue of the coming-of-age ceremony.

Name	Date	Operating body	Number of participants	Summary
Volunteer Guide Training Course	9 and 23 October 2021, 16 February 2022	Toyako Town Board of Education	12	Workshop to train the guides of archaeological sites.
Hometown Education and Training Course	4 October 2021	Aomori City	46	Lecture for new teachers.
Environmental Activities Experiential Event	11 August 2021	Aomori City	37	Lecture for children and parents living in Aomori City and/or neighboring municipalities.
Citizens' School	21 December 2021	Aomori City	15	Lecture for citizens.
Guiding in English	31 July–2 August 2021.	Akita Prefecture	11	Workshop to train junior high and high school students to give a guided tour of the Isedotai Stone Circles in English.
Introductory Workshop for New Guides	25 April 2021–16 October 2021, six times in total.	Oyu Stone Circles Center	25	Lecture to train new guides for archaeological sites.
Skill Development Workshop for Guides	13 May 2021–5 November 2021	Oyu Stone Circles Center	31	Lecture to train the existing guides of archaeological sites to improve their skills.
Delivery Lecture	31 May 2021–14 January 2022	Kazuno City Board of Education	231	Lectures on World Cultural Heritage and Oyu Stone Circles (6 lectures in total) by the lecturer dispatched from the Oyu Stone Circles Center.

Name	Date	Operating body	Number of participants	Summary
Experiential Learning Program, "Bus Tour of Kiusu Earthwork Burial Circles"	18 August, 6, 10, 16, 20 October, 10, 13, 14 November 2021	Chitose City Board of Education	119	Visits to Kiusu Earthwork Burial Circles -- and other places, such as Chitose City Buried Cultural Properties Center and other Historic Sites in the city on some occasions -- guided by the staff of the Chitose City Buried Cultural Properties Center or volunteer guides.
Special Exhibition, "Why Not Visit Other Jomon Prehistoric Sites in Northern Japan? Northern Tohoku Region"	7 January–25 March 2022	Chitose City Board of Education	80	Display of panels introducing the component parts and related sites in Aomori, Akita and Iwate Prefectures.
Lectures about Jomon for Children	(i) 11 June 2021, (ii) 14 July 2021, (iii) 15 October 2021, (iv) 21 October 2021	Hirosaki City Board of Education	146	Program for the 5th and 6th graders of the Susono Elementary School and all students of the Susono Junior High School to learn about the value of the Omori Katsuyama site, the Jomon culture, other Jomon sites in the surrounding area, and efforts for World Heritage List inscription. The following programs were provided at four times: (i) delivery lecture, (ii) field trip, (iii) cultural properties mapping project, and (iv) pottery-making experience. The 5th and 6th grade elementary school children (25) participated in (i) to (iv), while junior high school students (29) participated in (i) and (ii).
Winter Solstice Monitoring Tour	22 December 2021	Hirosaki City Board of Education	13	Event on the winter solstice to observe the setting of the sun on the summit of Mt Iwaki, for participants of the guide training program.
Korekawa Jomon Museum Archaeology Lecture, "Jomon Prehistoric Sites in Northern Japan and World Heritage VII"	(i) 15 May, (ii) 19 June, and (iii) 10 July 2021	Korekawa Archaeological Institution	170	(i) Beyond World Heritage List inscription, (ii) Kiusu Earthwork Burial Circles in Chitose City, Washinoki Stone Circles, and pit graves, (iii) let's think about the value of Jomon culture.
Korekawa Jomonkan Archaeology Lecture, "Jomon Life Reflected in Plants"	(i) 18 December 2021 and (ii) 15 January 2022	Korekawa Archaeological Institution	81	(i) The environment and plants of <i>satoyama</i> , (ii) plant use in the Jomon period, as seen in woven products such as baskets and ropes.
Special Exhibition Archaeology Lecture	11 December 2021	Korekawa Archaeological Institution	52	Korekawa site in East Asia and World Cultural Heritage.
Support Staff Training Workshop	(i) 29 May 2021 and (ii) 26 February 2022	Korekawa Archaeological Institution	48	Lecture on World Heritage.
Autumn Special Exhibition's Archaeology Lecture	6 November 2021	Korekawa Archaeological Institution	60	"What it meant for the Jomon people to 'dress up'."
Lecture on the History of Hachinohe City	12 June 2022	Hachinohe City Library	16	Lacquer and Jomon people.
Negishi Community Center Lecture	26 June 2021	Negishi Community center	15	World Heritage and Jomon
World Heritage Lecture at Gonohe Elementary School	1 July 2021	Korekawa Archaeological Institution	70	Go to World Heritage. Learn about Jomon from the Korekawa site.
Tohoku Section Joint Convention of Institutes of Electrical and Information Engineers, Japan	12 June 2021	Hachinohe Institute of Technology	47	World Heritage Jomon Prehistoric Sites.
Hachinohe Central Lions Club Regular Meeting	16 August 2021	Hachinohe Central Lions Club	16	World Heritage Korekawa Site.
Lecture	1 and 8 October 2021	Hachinohe City Omei University	45	Jomon Korekawa and World Heritage.
First Hachinohe General Education Conference in 2021	22 October 2021	Hachinohe City Board of Education, Educational General Affairs Division	38	The life of Jomon people, as seen in Jomon pottery.
Jomopia: Archaeological Site Guides. The 2nd Open College.	23 October 2021	Jomopia Miyabata	30	Korekawa site in the context of the Jomon Prehistoric Sites in Northern Japan.

Name	Date	Operating body	Number of participants	Summary
Jomon Korekawa Volunteers' Study Meeting	30 October 2021	Jomon Korekawa Volunteers	13	Lacquer and Jomon people.
Korekawa Junior High School World Heritage Lecture	9 November 2021	Korekawa Archaeological Institution	99	Go to World Heritage. Learn about Jomon from the Korekawa site.
Lecture	9 November 2021	Hachinohe City General Policy Department the local residents cooperation promotion division	18	Korekawa Archaeological Institution and World Heritage.
Local Culture Study Class	17 November 2021	Hachinohe Gakuin University	321	Activities of the Korekawa Archaeological Institution and World Heritage Jomon Prehistoric Sites in Northern Japan.
The Open University of Japan's Second Semester Interview Course, "Jomon Archaeology of the Korekawa Site"	28 November 2021	The Open University of Japan	11	Lecture 8: World Heritage List inscription and the Jomon Prehistoric Sites in Northern Japan.
Online Seminar, "World Heritage seen from Geosite"	16 February 2022	Sanriku Geopark Promotion Council Chubu Block Meeting	71	World Heritage and the Korekawa site.
Online Training for Teachers and School Staff	16 February 2022	Korekawa Elementary School	16	World Heritage Korekawa site.
Total			119,321	

Table 22 Interpretation facilities (related with Indicator VII-2)

Name of component part		Name of facility	Year of establishment (year/month)	Note
001	Odai Yamamoto Site	Sotogahama Oyama Furusato Shiryokan	2001/4	
002	Kakinoshima Site	Hakodate Jomon Culture Center	2011/11	
003	Kitakogane Site	Kitakogane Site Information Center	2001/6	
004	Tagoyano Site	Tsugaru City Jomon Dwelling Museum	1987/3	
005	Futatsumori Site	Futatsumori Shell Midden Museum	2021/4	
006	Sannai Maruyama Site	Sannai Maruyama Jomon Culture Center	2019/4	
007	Ofune Site	Hakodate Jomon Culture Center	2011/11	
008	Goshono Site	Goshono Jomon Museum	2002/4	
009	Irie Site	Irie Takasago Museum	1998/4	
010	Komakino Stone Circle	Aomori City Komakino Stone Circle Preservation Museum	2015/4	
011	Isedotai Stone Circles	Isedotai Jomon Museum	2016/4	
012	Oyu Stone Circles	Oyu Stone Circles Museum	2002/4	
013	Kiusu Earthwork Burial Circles	Chitose City Buried Cultural Properties Center	2010/4	
014	Omori Katsuyama Stone Circle	Susono District Physical Education and Cultural Exchange Center	—	A section in the existing Susono District Physical Education and Cultural Exchange Center was used to exhibit excavated artifacts.
015	Takasago Burial Site	Irie Takasago Museum	1998/4	
016	Kamegaoka Burial Site	Tsugaru City Kizukuri Kamegaoka Archaeological Museum	1980/4	
017	Korekawa Site	Korekawa Archaeological Institution	2011/7	

Table 23 Information provision by pamphlets (related with Indicator VII-3)

Name/title	Prepared (revised) by	Format/volume	Printed copies	Language	Outline
Guidebook of Jomon Prehistoric Sites in Northern Japan -- Whole Area Navigation 2021	Council for the Preservation and Utilization of World Heritage Jomon Prehistoric Sites	A4, 20 pages	35,000	Japanese	Pamphlets introducing the overviews, highlights, events, etc. of the component parts of the Jomon Prehistoric Sites in Northern Japan.
Jomon Prehistoric Sites in Northern Japan -- Handy Pamphlet	Council for World Heritage Jomon Prehistoric Sites	2/3 A4 landscape, 147 pages	38,300	Japanese and English	Pamphlets introducing the overviews of the component parts of the Jomon Prehistoric Sites in Northern Japan.
Jomon Prehistoric Sites in Northern Japan -- JOMON MAP (Japanese)	Council for World Heritage Jomon Prehistoric Sites	A1, double-sided	178,000	Japanese	Pamphlets introducing the locations of the component parts of the Jomon Prehistoric Sites in Northern Japan.
Jomon Prehistoric Sites in Northern Japan -- JOMON MAP (English)	Council for World Heritage Jomon Prehistoric Sites	A1, double-sided	34,200	English	Pamphlets introducing the locations of the component parts of the Jomon Prehistoric Sites in Northern Japan.
Pamphlet, "Jomon Prehistoric Sites in Northern Japan" (Japanese)	Headquarters for World Heritage Jomon Prehistoric Sites	A4, 16 pages	45,000	Japanese	Pamphlets introducing the Outstanding Universal Value of the Jomon Prehistoric Sites in Northern Japan and overviews of their component parts.
Pamphlet, "Jomon Prehistoric Sites in Northern Japan" (English)	Headquarters for World Heritage Jomon Prehistoric Sites	A4, 16 pages	6,000	English	Pamphlets introducing the Outstanding Universal Value of the Jomon Prehistoric Sites in Northern Japan and overviews of their component parts.
Jomon Prehistoric Sites in Northern Japan Comprehensive Preservation and Management Plan. Summary.	Headquarters for World Heritage Jomon Prehistoric Sites	A4, 20 pages	30,000	Japanese	Pamphlets summarizing the Comprehensive Preservation and Management Plan of the Jomon Prehistoric Sites in Northern Japan.
Booklet, "Let's North Jomon"	Hokkaido Prefecture	A5, 18 pages	50,000	Japanese	Introductory material about Hokkaido's Jomon culture for elementary school children and younger age groups.
Flyer, "Jomon Prehistoric Sites in Northern Japan"	Hokkaido Prefecture	A4, 1 page	14,000	Japanese	Introductory material about the component parts and related sites in Hokkaido and about World Heritage List inscription.
Booklet, "Do you know the Five Great Heritage Properties of Iburi, Hokkaido? -- Iburi's Treasures to Pass on to Future Generations"	Hokkaido Iburi General Promotion Bureau	A5, 17 pages	15,000	Japanese	Manga (Japanese comic) to raise awareness of children, who hold the future of Hokkaido in their hands, about local cultural heritage of the Iburi region, including Jomon sites.
Jomon Aomori Calendar	Aomori Prefecture	A3, double-sided	5,000	Japanese	Calendar communicating the value and content of the Jomon sites in Aomori Prefecture. Paintings that were collected from school children and students who live in the prefecture are used.
Jomon Aomori Textbook	Aomori Prefecture	B5, 116 pages	1,500	Japanese	Textbook for guides about the overview of World Heritage, the Outstanding Universal Value of the Jomon Prehistoric Sites, and the characteristics of the component parts.
Jomon in Akita	Akita Prefecture Board of Education	A5, 20 pages	8,500	Japanese	Study material (supplementary reader) for 6th graders.
Leaflet in celebration of successful World Heritage List inscription	Sotogahama Town and Odai Yamamoto Site Supporters' Team	A3, half fold, double-sided	5,000	Japanese	Value of the property and chronicle.
Banner advertisement promoting World Heritage inscription	Hakodate City Board of Education	L100.0, W100.0	1	Japanese	Advertisement banner with the Jomon Sites logo on the Hakodate tram, Rakkuru.
Jomon Prehistoric Sites in Northern Japan leaflet series. Historic Site, Kakinoshima Site.	Hakodate City Board of Education, Headquarters for World Heritage Registration Promotion for Jomon Prehistoric Sites	L21.0, W10.0	9,000	Japanese, English	Leaflet giving an outline of the Kakinoshima site.

Name/title	Prepared (revised) by	Format/volume	Printed copies	Language	Outline
World Heritage inscription publicity material	Hakodate City Board of Education	A4, double-sided	12,000	Japanese	Publicity material for distribution to all elementary school children in Hakodate City to raise awareness about the successful inscription of the Jomon Prehistoric Sites on the World Heritage List.
Sticker in celebration of successful World Heritage List inscription of the Jomon Prehistoric Sites in Northern Japan	Hakodate City Board of Education	A5, single-sided	12,000	Japanese	Novelty stickers for distribution to all elementary school children in Hakodate in celebration of the successful inscription of the Jomon Prehistoric Sites on the World Heritage List.
Leaflet on Historic Sites, Kakinoshima and Ofune	Hakodate City Board of Education	A4, tri-fold, double-sided	113,000	Japanese, English, Chinese (simplified and traditional), Korean	Leaflet introducing the Historic Sites, Kakinoshima and Ofune.
<i>Funkawan</i> Culture	Date City Institute of Funkawan Culture	A4, 16 pages	8,000	Japanese	Introduction of the Historic Site Kitakogane Kaizuka Park etc.
Map of explanatory boards in the archaeological sites	Tsugaru City Board of Education	A4, double-sided	500	Japanese	Information about the locations of simple explanatory boards that are placed at archaeological remains that spot the component part. Distributed at the Jomon Site Information Center.
Museum Guide	Tsugaru City Board of Education	A3, double-sided, 4 pages	4,000	Japanese	Information on the exhibits at the city museum, which is an official guidance facility for the component part.
Tsugaru City Local Studies Supplementary Reader	Tsugaru City Board of Education	A4, 20 pages	1,600	Japanese	A supplementary reader on the Jomon Prehistoric Sites in Northern Japan. Distributed to all third- to sixth-grade elementary school students and junior high school students in the city.
Historic Site, Futatsumori Site	Shichinohe Town Board of Education	A3, quarter-fold	18,000	Japanese	Leaflet on the Historic Park and Futatsumori Shell Mound Museum.
Special National Historic Site, Sannai Maruyama Site	Sannai Maruyama Jomon Culture Center	Five-panel accordion fold, 105 mm×210 mm	Japanese : 103,000	Japanese, English, Chinese (simplified and traditional), Korean, Thai	Leaflet introducing the archaeological site and the guidance facility.
Worksheets	Sannai Maruyama Jomon Culture Center	A4	—	Japanese	Worksheets for schools. Downloadable from the Sannai Maruyama Special Historic Site website.
Sannai Maruyama Site Guidebook (children's version)	Sannai Maruyama Jomon Culture Center	A4, 16 pages	10,000	Japanese	Booklet for children.
Sannai Maruyama Site Guidebook (digest version)	Sannai Maruyama Jomon Culture Center	A4, 16 pages	10,000	Japanese	Booklet for government officers on study tours.
Sannai Maruyama Site Guidebook	Sannai Maruyama Jomon Culture Center	A4, 92 pages	1,840	Japanese	Material for sale.
Sannai Maruyama News No. 74	Sannai Maruyama Jomon Culture Center	A3, 2 pages	3,000	Japanese	Information paper about the Sannai Maruyama Site
Sannai Maruyama News No. 75	Sannai Maruyama Jomon Culture Center	A3, 2 pages	3,000	Japanese	Information paper about the Sannai Maruyama Site

Name/title	Prepared (revised) by	Format/volume	Printed copies	Language	Outline
Jomon Prehistoric Sites in Northern Japan leaflet series -- Historic Site, Ofune Site	Hakodate City Board of Education, Headquarters for World Heritage Registration Promotion for Jomon Prehistoric Sites	L21.0, W10.0	9,000	Japanese, English	General information leaflet on the Ofune Site.
Pamphlet for deeper understanding, "Jomon People, who Lived with Nature"	Ichinohe Town Board of Education	A4, 8 pages	32,000	Japanese	Pamphlets summarizing the latest findings of researches and studies on the Goshono Site for those who seek to deepen their understanding.
Jomon Experience Programme	Ichinohe Town Board of Education	A4, 4 pages	4,000	Japanese	Introduction of Jomon experience events that are held at Goshono Jomon Park.
Goshono Site General Pamphlet	Ichinohe Town Board of Education	A4, 16 pages	3,000	Japanese	General pamphlets on the Goshono Site.
Goshono Site Information Map	Ichinohe Culture and Arts NPO	A3, 16-panel fold	3,000	Japanese	Information, such as the layout of the Goshono Site and the use of native plants in the surrounding area.
Guidebook on World Heritage, Jomon Prehistoric Sites in Northern Japan -- Irie Site and Takasago Burial Site	Toyako Town Board of Education	A5, 28 pages	10,000	Japanese	Guidebook explaining about the Irie Site and Takasago Burial Site and the exhibits at the Irie and Takasago Shell Mound Museum.
Leaflet, "Historic Site, Komakino Stone Circle"	General Association Komakino Stone Circle Preservation and Utilization Council	A4, 2 pages	5,500	Japanese, English, Chinese (simplified and traditional), Korean	Leaflet about the Komakino Stone Circle and its guidance facility.
Isedotai Stone Circles	Kitaakita City	A4	31,000	Japanese, English	—
Isedotai Stone Circles	Kitaakita City	A4, tri-fold	31,000	Japanese, English	—
Oyu Stone Circles Center Leaflet	Oyu Stone Circles Center	A4, tri-fold, double-sided	10,200	Japanese	—
Guidebook, Special Historic Site, Oyu Stone Circles	Oyu Stone Circles Center	A4, 32 pages (excluding the front cover)	300	Japanese	—
Pamphlet, "Historic Site, Kiusu Earthwork Burial Circles"	Chitose City Board of Education	A4, 8 pages	3,000	Japanese	Explanation about the characteristics of the Historic Site, Kiusu Earthwork Burial Circles, overview of research history, etc. *Revision of wording etc., in the FY2020 edition, in accordance with the successful inscription on the World Heritage List.
Leaflet, "Kiusu Earthwork Burial Circles. Visiting and Walking Map"	Chitose City Board of Education	A4, 1 sheet, double-sided	10,000	Japanese	Information about where to visit at and around the Historic Site, Kiusu Earthwork Burial Circles.
Leaflet on Omori Katsuyama Site	Hirosaki City Board of Education	A4, folded, double-sided	7,000	Japanese	Renewal of leaflets.
Poster on Omori Katsuyama Site	Hirosaki City Board of Education	B2	200	Japanese	Renewal of posters.
Pamphlet on Korekawa Jomonkan special exhibition 2021	Hachinohe City Buried Cultural Property Center, Korekawa Archaeological Institution	A3, 4 pages	5,000	Japanese	Explanatory pamphlets for the special exhibition, "Korekawa Site".
Pamphlet on Korekawa Jomonkan autumn special exhibition 2021	Hachinohe City Buried Cultural Property Center, Korekawa Archaeological Institution	A3, half-fold, 4 pages	5,000	Japanese	Explanatory pamphlets for the autumn exhibition, "clothes -- people who adorn themselves".

Name/title	Prepared (revised) by	Format/volume	Printed copies	Language	Outline
Pamphlet on World Heritage, Korekawa Site	Hachinohe City Buried Cultural Property Center, Korekawa Archaeological Institution	A3, half-fold, 4 pages	10,000	Japanese	Explanatory pamphlets on the Korekawa Site.
Social studies supplementary reader, "World Heritage, Korekawa Site"	Hachinohe City Buried Cultural Property Center, Korekawa Archaeological Institution	A5, 16 pages	2,500	Japanese	Social studies supplementary reader for elementary school children.
Total			972,241		

Table 24 Information provision on websites (related with Indicator VII-3)

Name	Organizer	Outline	URL	Language	Update (times)	Views
Jomon Prehistoric Sites in Northern Japan	Headquarters for World Heritage Registration Promotion for Jomon	Introduction of the Jomon Prehistoric Sites in Northern Japan.	https://jomon-japan.jp/	Japanese, English	28	595,091
Jomon of the Iburi Region	Hokkaido Iburi General Promotion Bureau	Introduction of initiatives by municipalities and Jomon-related cultural facilities in the administrative area of the Iburi General Promotion Bureau.	http://www.iburi.pref.hokkaido.lg.jp/hk/kks/jomon/toppage.htm	Japanese	6	1,224
Ishikari JOMON CLIP	Hokkaido Ishikari Promotion Bureau	A website that provides information related to the Jomon culture in the administrative area of the Ishikari Promotion Office with videos and photos to highlight its attractiveness.	https://www.ishikari.pref.hokkaido.lg.jp/hk/kks/jomonclip.html	Japanese	39	883
Ishikari Promotion Bureau News (Jomon World Heritage version)	Hokkaido Ishikari Promotion Bureau	YouTube video highlighting the attractiveness of Jomon culture within the administrative area, including the Kiusu Earthwork Burial Circles (Chitose City).	https://www.youtube.com/watch?v=m2PILBMihz8 他	Japanese	7	4,530
Jomon World Heritage Promotion Office / World Heritage inscription promotion portal	Hokkaido prefecture	Introduction of the Jomon culture and Jomon sites in Hokkaido Prefecture.	http://www.pref.hokkaido.lg.jp/ks/bns/jomon/ondex.htm	Japanese	30	47,023
Cultural properties of Aomori	Aomori prefecture	Introduction of cultural properties in Aomori Prefecture.	http://www.pref.aomori.lg.jp/bunka/education/culture.html	Japanese	16	6,106
Akita Prefecture official homepage	Akita prefecture	Information about the successful inscription of the Jomon Prehistoric Sites on the World Heritage List etc.	https://www.pref.akita.lg.jp/pages/genre/bunka	Japanese	3	—
Sotogahama Town	Sotogahama town	Official website of Sotogahama Town (overview of the archaeological site etc.).	http://www.town.sotogahama.lg.jp	Japanese	56	2,780
Hakodate City	Hakodate city	Official website of Hakodate City (overview of the archaeological site etc.).	https://www.city.hakodate.hokkaido.jp	Japanese	18	78,758
Hakodate City Jomon Cultural Exchange Center	Hakodate City Jomon Cultural Exchange Center	Webpage introducing the projects, programs, and other activities of the Jomon Cultural Exchange Center, the status of opening, etc.	http://www.hjcc.jp/	Japanese, English	43	8,590
Hakodate City Jomon Cultural Exchange Center staff blog	Hakodate City Jomon Cultural Exchange Center	Blog by the staff of the Hakodate City Jomon Cultural Exchange Center, providing information about events at the center as well as Jomon culture.	http://blog.livedoor.jp/hako_mai/	Japanese	6	3,304
Institute of Funkawan Culture	Date city	Official website of Date City Institute of Funkawan Culture providing information about the Historic Site, Kitakogane Site, etc.	https://www.date.city.hokkaido.jp/funkawan/	Japanese	12	3,000
Historic Site, World Heritage, museum	Tsugaru city	Official website of Tsugaru City (information about events, the archaeological site, Jomon sites' information centers, guide activities, etc.).	http://www.city.tsugaru.aomori.jp/soshiki/kyoiku/syakaikyoiku/shIseki	Japanese	15	—
TABI*KURA base of the trip. Shichinohe, Aomori	Shichinohe town Tourism and Product Promotion Council	Information on the Historic Site, Futatsumori Site, and its guidance facility.	https://www.shichinohe-kankou.jp/futatsumorikaizuka/	Japanese, English	8	5,517
Facebook of Shichinohe Town Board of Education World Heritage Nomination Section	Shichinohe Town Board of Education	Information on the Historic Site, Futatsumori Site, and its guidance facility.	https://www.facebook.com/%E4%B8%83%E6%88%B8%E7%94%BA%E6%95%99%E8%82%B2%E5%A7%94%E5%93%A1%E4%BC%9A%E4%B8%96%E7%95%8C%E9%81%BA%E7%94%A3%E5%AF%BE%E7%AD%96%E5%AE%A4	Japanese	96	15,747

Name	Organizer	Outline	URL	Language	Update (times)	Views
Sannai Maruyama Special Historic Site	Sannai Maruyama Jomon Culture Center	Introduction of the archaeological site, unearthed artifacts, and the facility.	https://sannaimaruyama.pref.aomori.jp	Japanese, English, Chinese, Korean	60	420,000
Goshono Jomon Park website	Ichinohe Culture and Arts NPO	Basic information about the Goshono Site and Goshono Jomon Park, including events.	https://goshono-Iseki.com	Japanese, English, Chinese, Korean	90	253,460
Aomori City	Aomori City	Official website of Aomori City (overview of the archaeological site and the guidance facility).	https://www.city.aomori.aomori.jp/	Japanese	4	2,703
Historic Site, Komakino Stone Circle	General Association Komakino Stone Circle Preservation and Utilization Council	Official website of the Komakino Stone Circle (overview of the archaeological site, events, access, etc.).	https://komakinosite.jp/	Japanese	32	121,517
Historic Site, Komakino Stone Circle/ Jomon no Manabisha, Komakino Kan	General Association Komakino Stone Circle Preservation and Utilization Council	Official Facebook page of the Komakino Stone Circle (overview of the archaeological site, events, access, etc.).	https://www.facebook.com/komakinosite/	Japanese	86	62,693
Historic Site, Isedotai Stone Circles	Kitaakita City Board of Education	Official website of the Isedotai Stone Circles (overview of the archaeological site, events, access, etc.).	http://www.city.kitaakita.akita.jp/isedotai	Japanese	—	57,374
Kazuno City official website Oyu Stone Circles Center	Kazuno City	Introduction of the Oyu Stone Circles and Oyu Stone Circles Center, including events.	https://www.city.kazuno.akita.jp/kanko_bunka_sports/bunkazai/7/5593.html	Japanese	—	50,425
Kiusu Earthwork Burial Circles	Chitose City	Overview of the Historic Site (articles, photos, topographical maps), access, pamphlets (PDF in Japanese, English, traditional Chinese, simplified Chinese, Korean), and explanation about UNESCO World Heritage List inscription.	https://www.city.chitose.lg.jp/docs/95-3227-169-915.html	Japanese	1	15,214
Historic Site, Omori Katsuyama Site, and World Heritage	Hirosaki City	Introduction of the Omori Katsuyama Site and activities for World Heritage List inscription. In late August, this website was renewed and re-named as "Omori Katsuyama Site".	http://www.city.hirosaki.aomori.jp/gaiyou/chosya/gyousei/omori_katsuyamalsekitosekaiisan.html	Japanese	2	4,569
Omori Katsuyama Site	Hirosaki City	Introduction of the Omori Katsuyama Site and activities for World Heritage List inscription. In late August, this website was established to replace the webpage, "Historic Site, Omori Katsuyama Site, and World Heritage".	http://www.city.hirosaki.aomori.jp/gaiyou/bunkazai/kuni/omori_katsuyama/index.html	Japanese	6	2,942
Hachinohe City Buried Cultural Property Center Korekawa Archaeological Institution	Hachinohe City Buried Cultural Property Center, Korekawa Archaeological Institution	Official website of the Korekawa Site and Korekawa Archaeological Institution (overview of the archaeological site and the museum, events, access, etc.).	https://www.korekawa-jomon.jp/	Japanese, English	92	119,799
Total					756	1,883,249

Table 25 Overview of private sector organizations involved in the preservation and utilization of component parts (related with Indicator VIII-1)

Name	Type of organization	Number of members	Established in	Outline of the organization
Odai Yamamoto Site Supporters' Team	Voluntary organization	10	July 2019	PR activities for the archaeological site.
Southern Hokkaido History and Culture Promotion Foundation	General incorporated association	47	April 2016	This organization is designated as the administrator of the guidance facility, Hakodate City Jomon Cultural Exchange Center. It is the contractor for management of the Ofune site, which is a component part. It also carry out archaeological excavations in the city, including the Ofune H site.
<i>Jomon of North</i> Club	Voluntary organization	50	April 1998	This organization works to raise public awareness about the Jomon culture through activities such as the manufacturing of pottery, comma-shaped gems, etc. and the cleaning of archaeological sites. It is awarded a Hokkaido Local Culture Prize in 2017.
Southern Hokkaido Jomon Culture Promotion Council	Voluntary organization	1,172 member corporations	August 2013	This organization is based on the Hakodate-Hokuto-Nanae Economic Organization Council, comprising the chambers of commerce and associations of commerce and industry of two cities and one town. It hosts events and produces goods to raise awareness about the Jomon culture, as well as the installation of hanging banners on buildings in front of the railway station. It has 56 regular members and 1,116 supporting members.
Okonshibe Association	Voluntary organization	40	May 2001	Volunteer guides at the Historic Site, Kitakogane Site.
Date Funkawan Jomon Festival Executive Committee	Voluntary organization	15	May 1997	This organization organizes experiential learning events at the historic site park.
Futatsumori Site Preservation Cooperation Association	Voluntary organization	16	April 1997	This organization carries out the fumigation of the reconstructed pit dwellings at the Historic Site, Futatsumori Site, as well as the cleaning of utility facilities and mowing.
Futatsumori Site Volunteer Guide Association	Voluntary organization	7	April 2021	This organization was established to succeed volunteer guides' organization that had been founded by local people. It provides volunteer guides of the archaeological site and carries out hands-on activities.
Sannai Maruyama Supporters' Team	General incorporated association	88	May 1995	This organization provides reception service at the Sannai Maruyama Jomon Culture Center, provides guides of the archaeological site, and carries out hands-on artisanship, among others.
Sannai Maruyama Jomon Association	NPO	81	August 2003	This organization publishes the "Jomon File" six times a year, providing up-to-date information about the archaeological site, and gives lectures called "Jomon Juku" (lit., Jomon School).
Nature and History Association	Voluntary organization	25	July 1996	This organization promotes information exchange, provides training, and carries out clean-up activities for the cultural properties and nature of the town, including the Goshono Site.
Goshono Site Supporters' Association	Voluntary organization	25	April 2002	This organization provides visitor information and interpretation about exhibits at the Goshono Site.
Goshono Excavation Friends' Association	Voluntary organization	30	April 2004	This organization carries out clean-up activities at the Goshono Site and creates museum goods for sale.
Goshono Protection Boys and Girls Club	Voluntary organization	61	May 1999	This organization comprises school children in grades 3 to 6 of Ichinohe Minami Elementary School of Ichinohe Town. It carries out clean-up activities, PR activities, study and research on the Goshono Site. It make a public presentation about the results of its activities every year.

Name	Type of organization	Number of members	Established in	Outline of the organization
<i>Aputa Furenai</i> Association	Voluntary organization	20	April 2003	This organization aims at deepening people's understanding of the valuable archaeological sites of Toyako Town, promoting their protection and utilization them, and disseminating information about them.
Komakino Stone Circle Preservation and Utilization Council	General incorporated association	7	October 2014	This organization works for the preservation and utilization of the Komakino Site and the conservation of the surrounding area. It manages and operates the Komakino Archaeological Site Protection Center and observation facilities as a designated administrator.
Isedotai Stone Circles Working Group	Voluntary organization	20	April 1997	This organization provides volunteer guides at the archaeological site and works for information dissemination, utilization, etc.
Isedotai Stone Circles Junior Volunteer Guides	Voluntary organization	52	July 2015	Volunteer guides, comprising elementary school children, junior high school students, and high school students.
Oyu SC Association	Voluntary organization	40	July 2019	This organization provides guides at Oyu Stone Circles (including the guidance facility).
Chitose Cultural Property Protection Association	Voluntary organization	20	November 1979	This organization implements projects that are necessary for the protection of cultural properties and the awareness-raising about it, carries out researches and studies on cultural properties, publishes a bulletin for learning, and develops, distributes, and promotes other necessary materials.
Kiusu Earthwork Burial Circles Protection and Utilization Association	Voluntary organization	33	June 2014	This organization carries out activities for members to learn about the Kiusu Earthwork Burial Circles and other archaeological sites in the city, citizens' activities to support the preservation and utilization of the Kiusu Earthwork Burial Circles as a component part of the World Heritage property, and activities to provide information about the archaeological sites in the city and the prehistoric period on the Internet and by other means, including lectures and study tours. It also promotes exchanges with the relevant organizations in and outside the city with a view to promoting activities and improving quality through coordination.
Council for the Promotion of the Preservation and Utilization of the Historic Site, Omori Katsuyama	Voluntary organization	18	July 2013	This organization carries out the maintenance of the archaeological sites, including mowing, and organizes events for presentation and/or utilization, and works for the preservation and management of the archaeological site.
Hirosaki Jomon Association	Voluntary organization	100	September 2014	This organization was established to raise awareness about the value and attractiveness of the Omori Katsuyama Site and other Jomon sites in the Tsugaru region. It organizes the guide training workshop for the Omori-Katsuyama Site.
Omori Katsuyama Jomon Site Guides' Association	Voluntary organization	30	January 2022	It provides guides for the Omori Katsuyama Site.
Tsugaru Jomon Association	NPO	100	July 2007	This organization hosts events, forums, and workshops about the Kamegaoka Site to provide information about the archaeological site.

Name	Type of organization	Number of members	Established in	Outline of the organization
Tsugaru Jomon Site Guides	Voluntary organization	12	September 2019	It provides guides for the Kamegaoka Site and its guidance facility.
Korekawa Cultural Property Protection Association	Voluntary organization	13	July 1974	This organization carries out patronage projects, such as environmental improvement and conservation activities at the Korekawa Site.
Hachinohe Jomon Preservation Association	Voluntary organization	139	October 1995	This organization provides cooperation to projects related to the Korekawa Jomon Museum, supports the Jomon Korekawa volunteers, and organizes events to promote the Korekawa Site for World Heritage List inscription.
Jomon Korekawa Volunteers	Voluntary organization	45	October 1996	This organization provides volunteer guides for the Korekawa Site and the Korekawa Jomonkan exhibition room, advises about hands-on learning, and carries out internal training to improve skills, among others.
Total		2,316		

Table 26 Activities of local people and civic groups (related with Indicator VIII-1)

Title/Name	Date	Organizer	Number of participants	Summary
North Jomon Marché	12 December 2021	Someya Shokai, club activities on clay figurines and haniwa	—	Workshops to making items with Jomon motifs and sales of goods.
DOKI♡DOKI♡ "pottery making experience" for adults	23 November 2021	North 24 Avenue Shopping Street Promotion Association	20	Hands-on event to experience earthenware-making on the model of Jomon pottery.
Publication of the 30th issue of the "Jomon Aomori"	1 December 2021	Association for the World Heritage List Inscription of Aomori Prefecture's Jomon Sites	9,023	Newsletter of the Association for the World Heritage List Inscription of Aomori Prefecture's Jomon Sites. The number of members: 93 corporate and organizational members, 8,930 individual members.
8th meeting	11 June 2021	Odai Yamamoto Site Supporters' Team	10	The meeting by document circulation and exchange in writing.
9th meeting	12 January 2022	Odai Yamamoto Site Supporters' Team	8	
Panel exhibition of Jomon sites	1–5 May 2021	Jomon DOHNAN Project	250	Panel exhibition and workshop about Jomon sites were held in Onuma Park in cooperation with the municipal board of education. The number of participants is an approximate figure.
Local community contribution activities	1–10 June 2021	Kudo-gumi Inc.	40	Gravels were laid at the Ofune Site and rope fences were installed at the Kakinoshima Site as part of community contribution activities. The number of participants (workers) is an approximate figure.
Aomori-Hakodate's Future Conference	11 June 2021	Hakodate Finance Office	65	Online discussion on the theme of "SDGs and local community vitalization learning from the Jomon period -- the future vision of Aomori and Hakodate living with Covid-19". Curator of the municipal board of education participated as a panelist.
Donation of the "Travel Guide to Jomon Prehistoric Sites in Northern Japan"	21 July 2021	Hakodate Chamber of Commerce and Industry	105	1,340 copies were donated to 268 facilities, including all the elementary and junior high schools in the Oshima and Hiyama regions of Hokkaido with the cooperation of 105 donors.
World Heritage List inscription awareness-raising and PR project	28 July 2021–	Hakodate Chamber of Commerce and Industry	—	"Hakodate City Has World Heritage" stickers (2,100 pieces) were distributed to members, and signs and banners were installed in various places of the city to raise awareness about the successful World Heritage List inscription.
4th Hokkaido Newspaper Jomon Painting Competition	20–31 August 2021	Hokkaido Shimibun Press Hakodate Branch	302	Paintings were called for from elementary and junior high school students in the Ojima and Hiyama regions of Hokkaido on the theme of the Jomon period. Co-organized by the city board of education.
Jomon pottery making	29 August 2021	<i>Jomon of North Club</i>	15	Jomon pottery-making workshop was held at the Minami Kayabe center in Hakodate.
Hakodate Jomon Sweets Stamp Rally	8 October–30 November 2021	Hakodate Sweets Association	182	Assortments of sweets were offered as a prize in a draw for those who have bought Hakodate Jomon sweets or Hakodate Jomon ice cream at one of the 14 shops in Hakodate and southern Hokkaido and submitted applications.

Title/Name	Date	Organizer	Number of participants	Summary
Jomon Wellness -- Chestnut Holidays	9 October 2021	Jomon DOHNAN Project	30	As a project related to the Aomori RAMUDA Conference, the Kakinoshima Site was used as the venue for events to learn about chestnut and enjoy walking around the archaeological site.
JOMON concert in the Kakinoshima Site	9 October 2021	General Incorporated Association Donan History and Culture Promotion Foundation and Jomon DOHNAN Project	69	Three concerts, including a Jazz concert, were held at the lawn field of the Kakinoshima Site, so that the archaeological site would be used in the local community and local people would feel more familiar to the archaeological site.
Hakodate Jomon Sweets Festa 2021	30–31 October 2021	Hakodate Sweets Association	6,000	Nine Japanese and Western sweets shops in Hakodate and southern Hokkaido joined forces to sell Hakodate Jomon sweets of their own making at bookshops in the city.
Autumn tree-planting project	23 October 2021	Minami Kayabe Forest and Sea Association	43	Eighteen chestnut trees were donated and planted at the Historical Site, Kakinoshima Site.
One-day tour, "Jomon Journey on the Chartered Train, 'the Sea Blessings'"	6 November 2021	JTB Corporation Hokkaido Division	20	Train journey was organized, jointly with the Hakodate Sweets Council, to visit the Kakinoshima Site, Hakodate City Jomon Cultural Exchange Center, etc., with opportunities of enjoying gourmet foods and sweets that are associated with Jomon during the visits.
Donation	12 November 2021	Hakodate Regional Forestry Association	10	Five walnut trees, three wood benches, etc. were donated and planted/installed in the green belt of the parking lot of the Jomon Cultural Exchange Center
Exhibition of paintings submitted to the 4th Hokkaido Newspaper Jomon Painting Competition	9–21 December 2021	Hokkaido Shimibun Press Hakodate Branch	1,585	Three hundred and two paintings that were submitted to the 4th Hokkaido Newspaper Jomon Painting Competition were exhibited at a department store in the city.
Donation	12 December 2021	Hakodate Forest Certification Promotion Council	—	Three wood benches were donated and installed at the Historic Site, Kakinoshima Site.
Exhibition of paintings submitted to the 4th Hokkaido Newspaper Jomon Painting Competition	8–27 January 2022	Hokkaido Shimibun Press Hakodate Branch	406	Seventy-two paintings that were submitted to the 4th Hokkaido Newspaper Jomon Painting Competition were exhibited at a department store in the city.
Aomori and Hakodate Jomon exchange event in Hokkuru	15 January 2022	Jomon DOHNAN Project	262	As a project related to the Aomori RAMUDA Conference, an online program was organized with a view to facilitating coordination between Aomori and Hakodate after the inscription on the World Heritage List, as well as hands-on workshops, sales of goods, etc.
Historic Site guides	1 April–30 November 2021	Okonshibe Association	8,829	On-site guides and/or instructors for experiential learning were provided. A total of 191 times.
Opening ceremony for the special radio station, "8J8JOMON", in celebration of the World Heritage List inscription of the Jomon Prehistoric Sites in Northern Japan	1 August 2021	General Incorporated Association The Japan Amateur Radio League	—	Opening event of a special amateur radio station in celebration of the successful inscription on the World Heritage List.
Lecture at Kizukuri Senior High School	17 June 2021	NPO Tsugaru Jomon Association	150	Lecture by specialist staff of the Tsugaru City Board of Education about the Jomon Prehistoric Sites in Northern Japan.
JOMON Kamegaoka and Tagoyano Sites' Festival 2021	23 October 2021	Tsugaru City Board of Education and NPO Tsugaru Jomon no Kai	160	In commemoration of the successful inscription of the Kamegaoka Site and the Tagoyano Site on the World Heritage List, a new event was organized for all generations to learn and enjoy the archaeological sites
Visitor guides	April–November 2021	Tsugaru Jomon Site Guides	—	Guided tours were provided to visitors to the Tagoyano Site.

Title/Name	Date	Organizer	Number of participants	Summary
Maintenance and management activities for Futatsumori Site	16 April–30 November 2021	Futatsumori Site Preservation Cooperation Association	16	Fumigation of pit houses in Futatsumori Shell Midden Historic Site Park and cleaning of facilities for visitors' convenience.
Guides for Futatsumori Site	1 April–31 March 2021	Futatsumori Site Volunteer Guide Association	1,168	Visitors (groups and individuals) to the Futatsumori Site and/or Futatsumori Shell Midden Museum were guided.
Jomon Quiz Rally 2021 in Futatsumori Site	7 and 8 August 2021	Futatsumori Site Volunteer Guide Association	36	A quiz rally was held at the Futatsumori Shell Midden Museum for elementary school children of the town.
Development and sale of souvenirs of Futatsumori Site	10 August 2021	Japanese Sweet MIYAKIN Co., Ltd. and Futatsumori Site Volunteer Guide Association	—	A local confectionery shop and a local guides' association jointly developed an assortment of cookies, named "Futatsu no Mori no Monogatari" (lit. "stories of two forests"), inspired by unearthed artifacts from the Futatsumori Site.
Jomon pottery-making workshop	17 September, 23 October 2021	Futatsumori Site Volunteer Guide Association	27	To consider the development of future hands-on activities, pottery shaping and firing in the field were tested with the participation of members guides and people concerned.
Guides for the archaeological site	1 April 2021–31 March 2022	General Incorporated Association Sannai Maruyama Supporters' Team	27,303	Guided tour of the archaeological site, visiting three-dimensional displays and exhibits of exposed archaeological remains.
Hands-on learning	1 April 2021–31 March 2022	General Incorporated Association Sannai Maruyama Supporters' Team	6,600	Hands-on learning, e.g., making of miniature clay figurines, in the guidance facility.
Clean-up activity at Ofune Site	25 April 2021	<i>Jomon of North Club</i>	6	Clean-up of the Historic Site, Ofune Site, and the road leading to the archaeological site.
Jomon pottery field firing	10 October 2021	<i>Jomon of North Club</i>	16	Pottery shaped and dried during the Jomon potter-making workshop was fired in the open air at the experience square of the Ofune Site.
Jomon pottery-making and Jomon hot pot cooking	6 November 2021	<i>Jomon of North Club</i>	10	Pottery shaped and dried during the Jomon potter-making workshop was fired in the open air at the experience square of the Ofune Site. In addition, experimental cooking of Jomon hot pots was done, using the manufactured pottery.
Goshono Jomon Park Clean-up Day	24 April, 6 November 2021	Ichinohe Culture and Arts NPO	381	Clean-up of the Goshono Site with the participation of volunteer groups, private companies, and the general public. Twice a year (spring and autumn).
Clean-up activity by the Goshono Excavation Friends' Association	14 June, 12 July, 2 August, 13 September, 11 October 2021	Goshono Excavation Friends Association	64	Clean-up of the Goshono Site by the Goshono Excavation Friends' Association.

Title/Name	Date	Organizer	Number of participants	Summary
Congratulations on the Successful Inscription on the World Heritage List! Summer Holidays Jomon Komakino Stamp	1–15 August 2021	General Incorporated Association Komakino Stone Circle Preservation and Utilization Council	140	Stamp rally (archaeological site and guidance facility).
Komakino Jomon Academia 3	24 October 2021	General Incorporated Association Komakino Stone Circle Preservation and Utilization Council	18	Events such as workshop.
Doll Festival Stamp Rally	1–6 March 2022	General Incorporated Association Komakino Stone Circle Preservation and Utilization Council	11	Stamp rally (in the guidance facility).
Guide for the archaeological site	1 April 2021–31 March 2022	General Incorporated Association Komakino Stone Circle Preservation and Utilization Council	1,242	Explanation of Komakino Stone Circles to visitors (the number of guided groups).
Oyu Stone Circle Sunset Viewing Group	21 June 2021	Oyu Stone Circle Sunset Viewing Group	250	Singing of a stone circle hymn and viewing of the sunset at the archaeological site.
Maintenance and management activities for the Historic Site, Kiusu Earthwork Burial Circles	30 May, 5 June, 17 July, 5, 23, 25 September, 9 October, 13 November 2021	Central Union (local residents' neighborhood associations)	130 in total	Removal of weeds and bushes and cleaning of the entire Historic Site (30 May, 17 July and 23 September), monitoring inspection and cleaning of the Historic Site (5 September, 9 October, and 13 November), mowing and stacking of mowed grass at visitors' parking lot (5 June, 17 July, and 25 September).
Volunteer guides at the Historic Site, Kiusu Earthwork Burial Circles	12 July–27 August, 1 October –23 November 2021	Kiusu Earthwork Burial Circles Protection and Utilization Association, Chitose City (Buried Cultural Property Center)	382 in total	Accompanying visitors to the Kiusu Earthwork Burial Circles as guides (implemented as citizens' collaboration project).
Study Visits of World Cultural Heritage Candidate Sites	27 June 2021	Hirosaki Jomon Association	38 in total	Visits to the Susono Area Sports and Culture Exchange Center (exhibition facility) Omori Katsuyama Site, Kamegaoka Site, Tagovano Site, etc
Technical Workshop for Manufacturing of Comma-shaped Gems, Pottery, and Clay Figurines	26, 28 July 2021	Hirosaki Jomon Association	69 in total	Lecture prior to the Children's Jomon Culture and Jomon Life Experience (making of comma-shaped gems and clay figurines) to be held on the afternoon of 26 and 28 July 2021.
Children's Jomon Culture and Jomon Life Experience	26, 28 July 2021	Hirosaki Jomon Association	84 in total	Hands-on workshop for children to make comma-shaped gems and clay figurines.
Lecture about historical cultural heritage around the Omori Katsuyama Site	15 and 19 October 2021	Hirosaki Jomon Association	44 in total	Lectures about the Omori Katsuyama Site and Jomon and other Jomon sites in the surrounding area.
Bus tour of historical cultural heritage around the Omori Katsuyama Site	24 October 2021	Hirosaki Jomon Association	39 in total	Study tour of the Omori Katsuyama Site, Kamegaoka Site, and Odai Yamamoto Site.
Omori Katsuyama Site Guide Training Workshop	3, 10, 17 December 2021	Hirosaki Jomon Association	135 in total	Lectures and study tours of the Omori Katsuyama site as part of guide training.
Omori Katsuyama Site Awareness-Raising Workshop	19 December 2021	Hirosaki Jomon Association	40	Lecture about the Omori Katsuyama Site and workshop to discuss issues and utilization of the archaeological site.
Visitor guides	April–November 2021	Tsugaru Jomon Site Guides	864	Visitors to the Kamegaoka Site were guided.
Interpretation about the archaeological site and exhibits	1 April 2021–31 March 2022	Jomon Korekawa Volunteers	163	Interpretation about the Korekawa Site and the unearthed artifacts. As a measure to prevent the spread of the novel coronavirus, only visitors with reservation were accepted
Jomon experiential learning	1 April 2021–31 March 2022	Jomon Korekawa Volunteers	311	Sunday Jomon experience corner etc. As a measure to prevent the spread of the novel coronavirus, the experiential learning was carried out with a restricted content
Jomon Korekawa Volunteers' Workshop	30 October 2021	Jomon Korekawa Volunteers	13	Lacquer and Jomon people.
Total			67,184	

Table 27 Outline of custodial bodies involved in the preservation and utilization of component parts (related with Indicator VIII-1)

Name	Status of custodial body and name of the component part(s) in custody	Number of personnel in FY 2021	Outline of the organization as of FY 2021
Sotogahama Town	Owner and manager of Odai Yamamoto Site	【Number of personnel engaged in management and conservation of the component part(s)】 1 director (holding another post), 1 curator, 1 staff member (holding another post)	The Board of Education (World Heritage Section) is responsible for the preservation and management of the component part.
Hakodate City	Owner and manager of Kakinoshima Site and Ofune Site	【Number of personnel engaged in management and conservation of the component part(s)】 1 director, 3 technical staff members, 3 administrative officers	The Board of Education (World Heritage Registration Promotion Section, Cultural Property Division) is responsible for the preservation and management of the component parts.
Date City	Owner and manager of Kitakogane Site	【Number of personnel engaged in management and conservation of the component part(s)】 1 director, 1 technical staff member, 2 administrative officers	The Board of Education (Cultural Property Section, Lifelong Learning Division) is responsible for the preservation and management of the component part.
Tsugaru City	Owner and manager of Tagoyano Site and Kamegaoka Burial Site	【Number of personnel engaged in management and conservation of the component part(s)】 1 director, 4 technical staff members, 2 administrative officers	A Local government (388 staff members). The Board of Education (Social Education and Culture Division) is responsible for the preservation and management of the component parts.
Shichinohe Town	Owner and manager of Futatsumori Site	【Number of personnel engaged in management and conservation of the component part(s)】 1 director, 1 technical staff member, 2 administrative officers	A Local government (153 staff members). The Board of Education (World Heritage Section) is responsible for the preservation and management of the component part.
Aomori Prefecture	Owner and manager of Sannai Maruyama Site	【Number of personnel engaged in management and conservation of the component part(s)】 1 director, 1 deputy director, 9 technical staff members, 5 administrative officers	The Sannai Maruyama Jomon Culture Center, affiliated with Aomori Prefectural Board of Education, is responsible for the preservation and management of the component part.
Ichinohe Town	Owner and manager of Goshono Site	【Number of personnel engaged in management and conservation of the component part(s)】 1 director, 2 technical staff members, 1 administrative officer	The Board of Education (World Heritage Registration Promotion Section) is responsible for the preservation and management of the component part.
Toyako Town	Owner and manager of Irie Site and Takasago Burial Site	【Number of personnel engaged in management and conservation of the component part(s)】 1 director, 2 technical staff members	The Board of Education (Social Education Division) is responsible for the preservation and management of the component part.
Aomori City	Owner and manager of Komakino Stone Circle	【Number of personnel engaged in management and conservation of the component part(s)】 1 director, 3 technical staff members, 4 administrative officers	The Board of Education (Cultural Property Division) is responsible for the preservation and management of the component part.
Kitaakita City	Owner and manager of Isedotai Stone Circles	【Number of personnel engaged in management and conservation of the component part(s)】 1 director, 1 technical staff members, 4 administrative officers	The Board of Education (Cultural Property Section, Lifelong Learning Division) is responsible for the preservation and management of the component part.
Kazuno City	Owner and manager of Oyu Stone Circles	【Number of personnel engaged in management and conservation of the component part(s)】 1 director, 2 technical staff members, 1 administrative officer	The Oyu Stone Circles Museum, affiliated with the Board of Education (Lifelong Learning Division), is responsible for the preservation and management of the component part.
Chitose City	Owner and manager of Kiusu Earthwork Burial Circles	【Number of personnel engaged in management and conservation of the component part(s)】 2 directors (1 technical, 1 administrative), 4 technical staff members, 1 administrative officer	A local government (1,073 staff). The Board of Education (Buried Cultural Properties Center) is responsible for the preservation and management of the component part.
Hirosaki City	Owner and manager of Omori Katsuyama Stone Circle	【Number of personnel engaged in management and conservation of the component part(s)】 1 director, 2 technical staff members, 3 administrative officers, 1 civil engineer	The Board of Education (Cultural Property Division) is responsible for the preservation and management of the component part.
Hachinohe City	Owner and manager of Korekawa Site	【Number of personnel engaged in management and conservation of the component part(s)】 1 director, 1 deputy director, 5 technical staff members, 3 administrative officers	The Board of Education (Korekawa Archaeological Institution) is responsible for the preservation and management of the component part.

4. Summary

4.1 Indicators concerning the Outstanding Universal Value, integrity, and authenticity of the property.

- No negative impact on the value and attributes of the property has been identified or foreseen.

4.2 Indicators concerning the protection and management of the component parts.

- The number of permitted alterations to the existing state at the component parts has increased to 39, from 28 in FY2020, mainly for the purposes of protection and presentation of Historic Sites and without any acts having negative impact on the value of the component parts.
- There were two cases of damage at Oyu Stone Circles. There has been no damage to the underground archaeological remains.
- The number of heritage impact assessments of activities within the component parts (i.e., the number of deliberations to decide on whether or not detailed analysis should be carried out) has increased to 9, from 4 in FY2020. There have been no acts that had negative impact on the value of the property.
- The public land ownership of the Tagoyano Site has increased to 84%, marking progress from 67% in FY2020.
- There have been no significant changes in the environmental conditions surrounding the component parts, including temperature, humidity, precipitation, groundwater level, and vegetation. There has been no damage from natural disasters. No negative impact on the component parts has been identified or foreseen.
- The number of staff members specializing in research and study of the component parts has increased to 65, from 63 in FY2020, having enhanced the capacity of research and study.

4.3 Indicators concerning the factors that affect the property.

- The total number of applications that have been submitted to request permissions of private sector development projects in the buffer zone has increased to 24, from 14 in FY2020. They have been subjected to the legal procedure properly. Therefore, there have been no acts having negative impact on the value of the property.
- The number of heritage impact assessments of activities in and around the buffer zone (i.e., the number of deliberations to decide on whether or not detailed analysis should be carried out) has significantly increased to 27, from 12 in FY2020. There have been no development activities that would have negative impact on the value of the property.
- There has been no air pollution, vegetation change, or natural disaster damage that would significantly affect the value of the component parts.
- The number of visitors to the component parts has increased to approximately 276,000, which is 1.9 times as compared to 146,000 in FY2020.
- The number of information boards (signs) that guide visitors to the component parts has increased to 243, which is 1.3 times as compared to 188 in FY2020, as the capacity and infrastructure to receive visitors has been strengthened.

4.4 Indicators concerning the transmission of the Outstanding Universal Value.

- The number of participants in workshops related to the property has decreased to approximately 120,000 from 190,000 in FY2020, partly due to COVID-19. Even so, workshops have continued to be organized by local authorities, local residents, etc.
- The quantity of publication of pamphlets increased significantly to approximately 970,000 copies, which is 3.6 times as compared to 270,000 copies in FY2020. The number of website accesses has also increased significantly to approximately 1.88 million, which is 2.2 times as compared to 870,000 in FY2020. Information is actively disseminated through both conventional and digital media. In addition, more and more multilingual information media (e.g., pamphlets) are available.
- The number of members who belong to private organizations involved in the preservation and utilization of the component parts has increased to 2,316 (1,172 individuals and 1,144 organizations), which is 1.2 times as compared to 1,950 (1,131 individuals and 819 organizations) in FY2020, indicating active participation of local residents in the preservation and utilization of the component parts.